

Village of Elberta Recreation Plan 2020–2024

Village of Elberta Benzie County Michigan

Prepared for:

Village Council

Jennifer Wilkins, President

Ken Holmes

Holly O’Dwyer

Barbara Reichert

William Soper

Maryanne Goodman, Clerk

Mary Kalbach, Treasurer

PO Box 8 • 151 Pearson Street

Elberta, MI 49628-0008

(231) 352-7201

Table of Contents

Introduction.....	2
Administrative Structure	9
Recreation Inventory	10
Inventory of Existing Recreational Boating Facilities.....	17
County Recreation	18
Description of the Planning and Public Input Process	20
Goals, Objectives, and Action Program.....	21
Appendix A: Detail Maps of Village Parks.....	A-1
Appendix B: Elberta Beach Improvement Plan	B-1
Appendix C: Public Input Documentation	C-1
Appendix D: Approval Documentation	D-1

Table of Figures

Figure 1 - Village of Elberta Location.....	3
Figure 2 - Village Base Map	4
Figure 3 - Village Topography.....	5
Figure 4 - Benzie County Topography	5
Figure 5 - Village Population Density.....	6
Figure 6 - Benzie County Population Density	6
Figure 7 - Future Land Use Map.....	7
Figure 8 - Zoning Map.....	8
Figure 9 - Village Organization Chart Structure.....	10
Figure 10 – Village Recreational Map	19
Figure 11 - County Recreation Map	20

Introduction

This Recreation Plan provides a framework for utilizing the Village's resources for recreational purposes to effectively meet identified and anticipated needs. This plan identifies these recreational needs and proposes projects to satisfy current and future demands of residents and visitors alike. It provides a comprehensive strategy for meeting those community recreation needs. The plan is intended to complement the Village's overall planning and development efforts.

The planning process undertaken for this plan involved Village residents, trustees, and staff. Their input helped in generating a development plan for the Village's recreational facilities. Another element of this process is an assessment of the Village's local and area wide recreational resources. This includes an inventory of public and private recreational facilities. From this inventory, we established overall recreation goals and objectives for the Village.

The Village of Elberta's Recreation Plan concludes with an action program that suggests the direction and the activities that can be adopted for future recreational development and programming. This action program establishes program priorities, identifies financial requirements, and discusses the general administration of the overall program. This plan has been prepared to identify and propose a strategy for eliminating those deficiencies in the Village's recreation opportunities that can be accomplished within a five-year time frame. The plan has also been prepared to satisfy recreation planning requirements established under Michigan Department of Natural Resources (MDNR) guidelines.

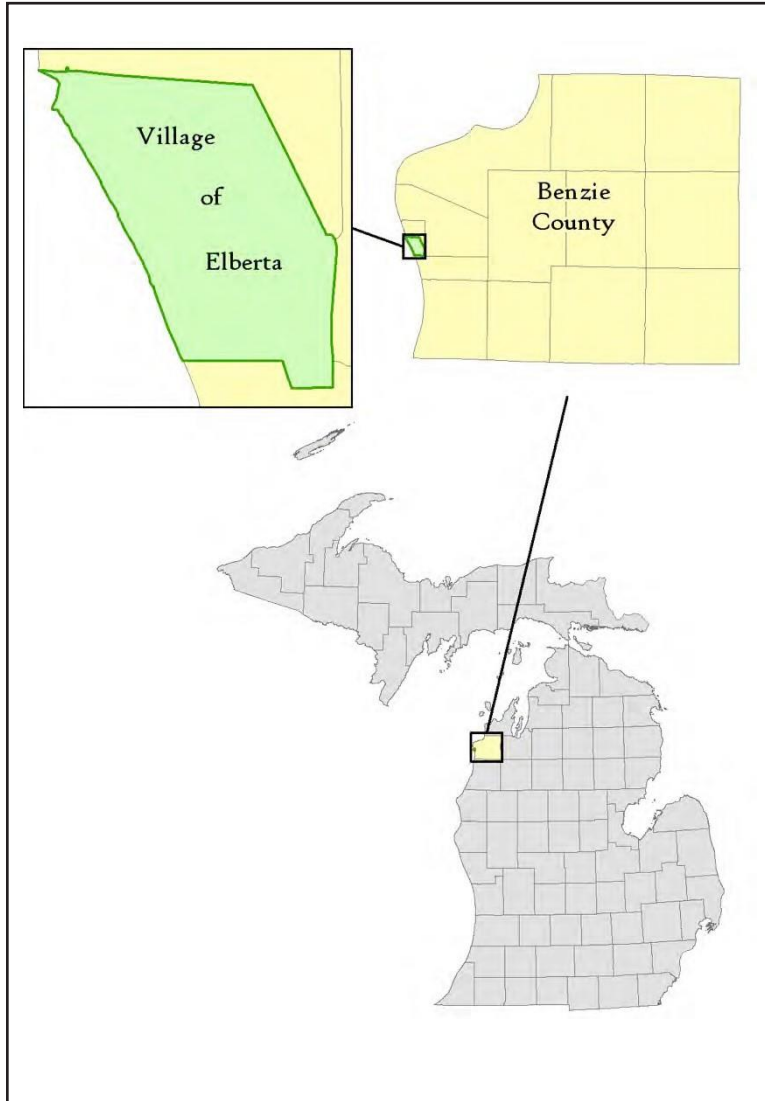


Figure 1 - Village of Elberta Location

Community Description

The Village of Elberta is a small village located on the western shore of Benzie County (Figure 1). The Village was first inhabited by settlers in the 1850s and soon became a center for the commercial shipping industry, specifically lumber. In 1866, the federal government constructed the first navigational channel in the area. This channel acted as the catalyst for the economic growth of the Village and the region. The channel served as the means for the development of sawmills, an iron foundry, a Lake Michigan car ferry, and other port-based businesses until the early 1980s when the Ann Arbor Railroad ceased its operation.

Recreation and associated leisure activities have become a significant part of the economic activity in the area. The type of activities preferred by a community's residents often reflects the specific characteristics of the community. Such

characteristics include a community's population growth rate, the age structure of the population, the socioeconomic composition of the population, land development patterns, available natural resources, climate, and geographical location. All these characteristics can be correlated to a community's recreational preferences in one manner or another, describing the particular quality of existing recreational opportunities as well as identifying some of the factors that will influence recreational needs in the future. Figures 2 through 8 on the following pages show different characteristics of the Village and the surrounding community.



Figure 2 - Village Base Map

Topography

The maps on this page show the topography of the Village and the surrounding county. Within the Village boundaries, the elevation ranges from about 580 feet to approximately 865 feet. Elevation in the surrounding county ranges from 424 feet to 1,159 feet. Elevation data was acquired from the Michigan Center for Geographic Information’s Data Library.



Figure 3 - Village Topography

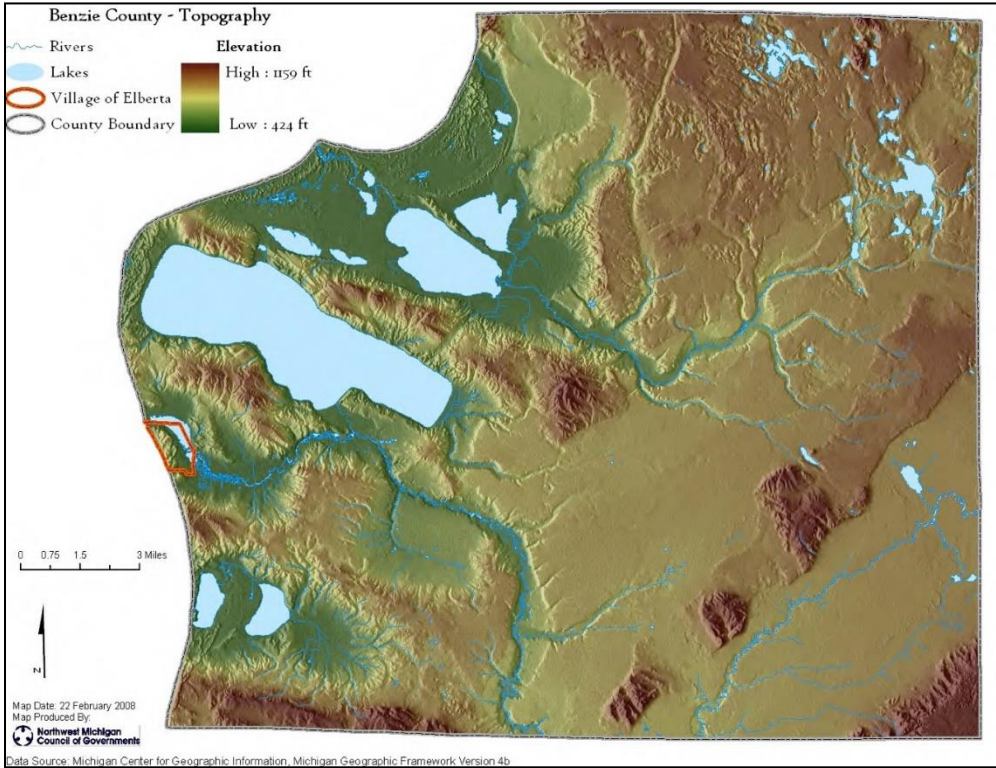


Figure 4 - Benzie County Topography

Population Density

The maps on this page show the population density (number of people per square mile) of the Village and the surrounding county. The data source for this information is the 2010 Census. It is shown to a block level. The Village’s population is 372 as of 2010. The Village Master Plan states that within the 0.7 square miles of land area available in the Village, 78.1% is vacant, 12.1% is residential, and 9.8% is commercial or industrial.



Figure 5 - Village Population Density

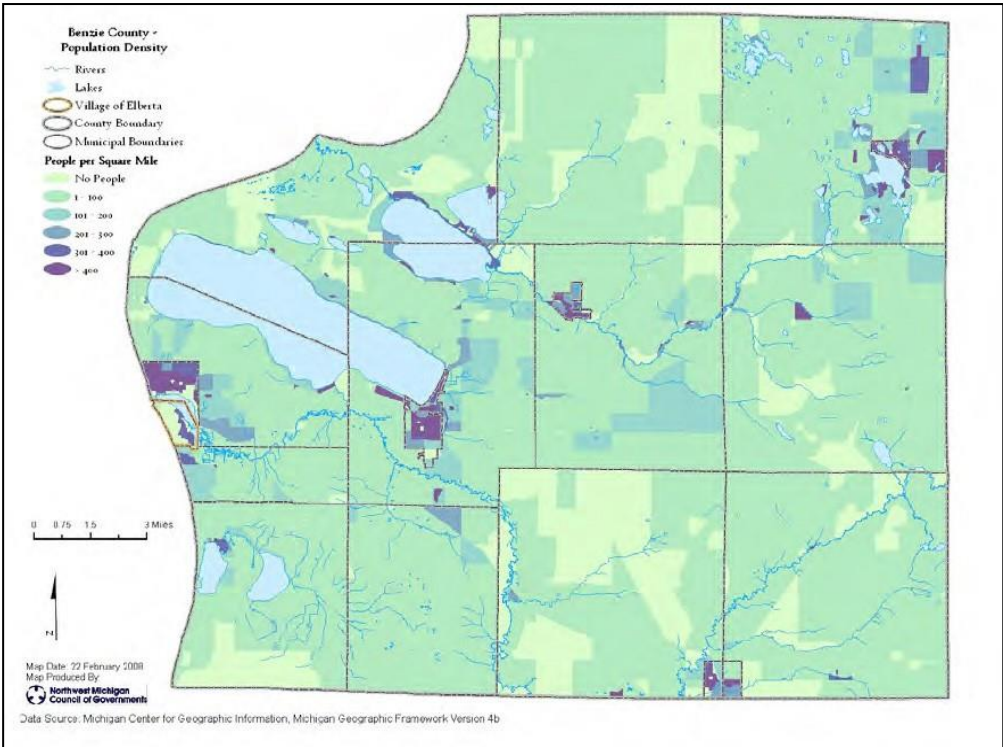


Figure 6 - Benzie County Population Density

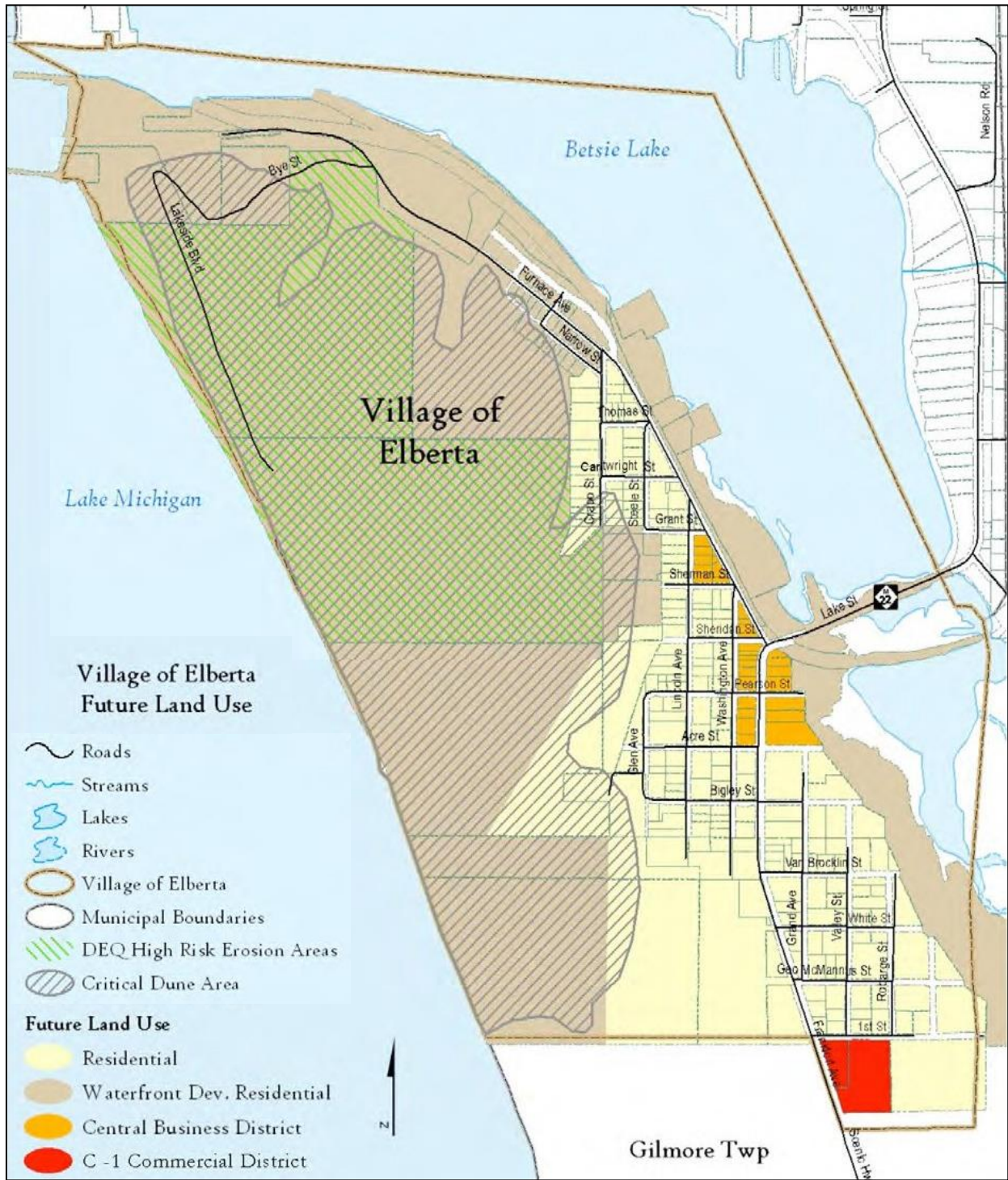


Figure 7 - Future Land Use Map

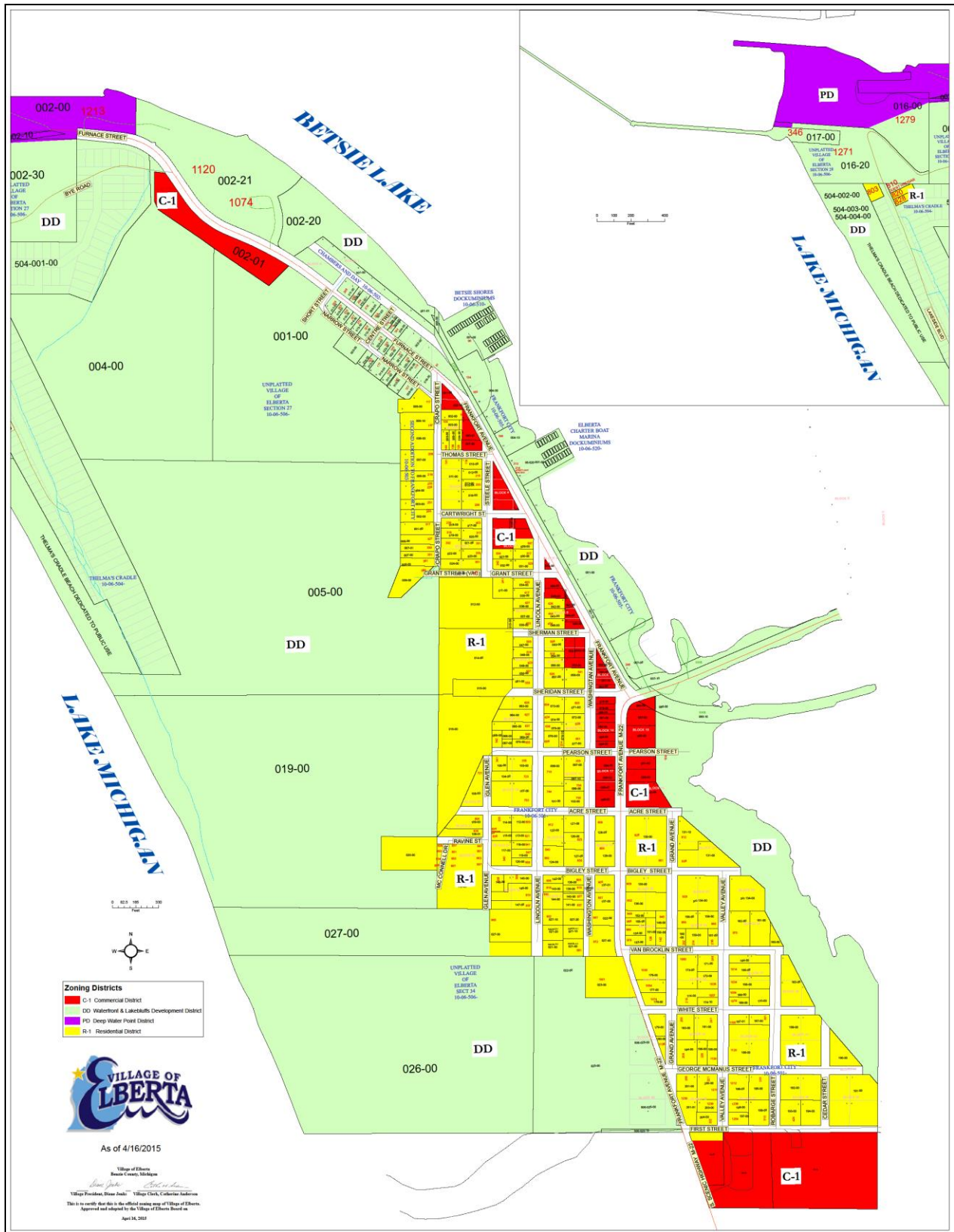


Figure 8 - Zoning Map

In Figure 7 and 8 the Critical Dune Area and High Risk Erosion areas within the Village are shown. According to the Michigan Department of Environment, Great Lakes and Energy (EGLE), Critical Dune areas protected by Part 353 represent the highest and most spectacular dunes extending along much of Lake Michigan’s shoreline and the shores of Lake Superior, totaling about 80,000 acres. The legislature has found that Critical Dune areas of the state are a unique, irreplaceable, and fragile resource that provide significant recreational, economic, scientific, geological, scenic, botanical, educational, agricultural and ecological benefits to the people of Michigan. Local units of government should have the opportunity to exercise the primary role in protecting and managing Critical Dune areas in accordance with this part. The benefits derived from alteration, industrial, residential, commercial, agricultural, silvicultural and the recreational use of Critical Dune areas shall occur only when the protection of the environment and the ecology of the Critical Dune areas for the benefit of the present and future generations is ensured.

Also according to the EGLE, high-risk erosion areas are those shorelands of the Great Lakes and connecting waters where recession of the zone of active erosion has been occurring at a long-term average rate of one foot or more per year. The erosion can be caused by one or several factors. High water levels, storms, wind, groundwater seepage, surface water runoff, and frost are important factors causing erosion. The high-risk erosion area regulations establish required setback distances to protect new structures from erosion for a period of 30 to 60 years, depending on the size, number of living units, and type of construction. Other setback requirements are applicable for home restorations and additions to existing structures. Any person or local government agency proposing to erect, install, move, or enlarge a permanent structure on a parcel must obtain a permit before the commencement of construction.

Administrative Structure

The park and recreation functions in the Village of Elberta are overseen by the Village Council. The Village also has a Parks and Recreation Commission whose role has been to orchestrate fundraising events to maintain and upgrade parks. The Village Clerk and Treasurer provide administrative support with payment of bills, coordination of bids and grant administration. The Village Department of Public Works is responsible for maintaining the parks. A Village Organization Chart is shown in Figure 9,

The Village employs one full time year-round and a seasonal part-time person within its Department of Public Works (DPW). The DPW is responsible for maintaining all the Village public spaces as well as the Village buildings, roads, waterworks and sanitary sewer system. The maintenance of most of the Village parks comes from the Village General Fund. The Historic Elberta Life Saving Station (ELSS) generates a significant amount of revenue annually for the Village with wedding and other event rentals every weekend from May into October. The ELSS revenue, under the terms of the Waterfront Park and Life Saving Station renovation grants, is used to maintain and improve the ELSS and Waterfront Park.

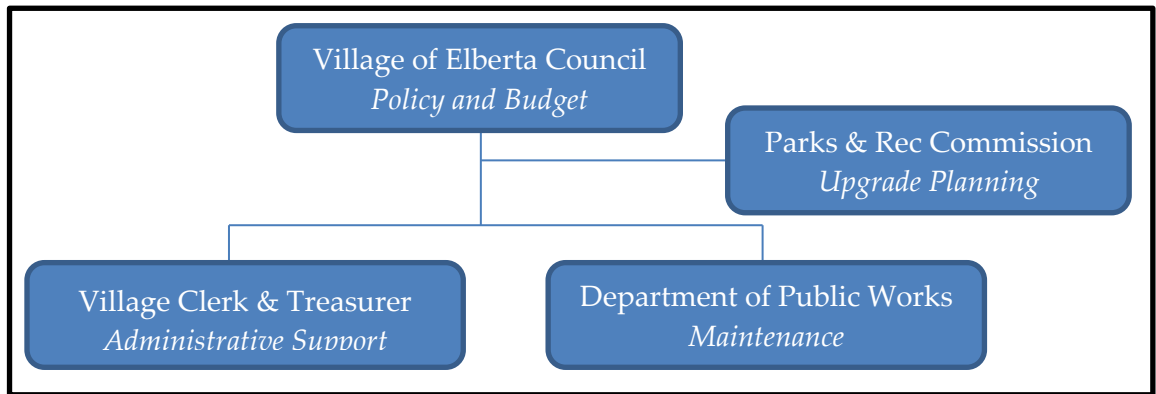


Figure 9 - Village Organization Chart Structure

The Parks and Recreation Commission is a volunteer organization. The Village currently collaborates with the Grand Traverse Regional Land Conservancy (GTRLC), Networks Northwest, The Betsie Valley Rails to Trails, the Frankfort/Elberta Chamber of Commerce, and the City of Frankfort.

Recreation Inventory

Special Concerns for this Recreation Plan Period

Water Level Rise. Lake Michigan water levels in 2018-2019 are the highest they have been in over 30 years. With four recreation areas on the water’s edge, erosion has become a major concern. The portions of the Betsie Valley Trail that run through Elberta as well as Elberta’s Boat Launch, were underwater for the entirety of the 2019 summer season. Lake Michigan has backed up into the mouth of the Betsie River not only submerging the portions of the Betsie Valley Trail, but making the mini pond fill with leaves and debris as the natural water flow cannot clear it. The high lake waters are eroding the waters edge at Waterfront Park and have undercut the fishing pier, making it unsafe twice in the past five years. Finally, the Elberta Beach is being cut away by the high water. The high water is not only endangering the Village Parks, but has also shut down recreational access within the Village to fishing, boating, kayaking, and biking along the trail.

While the Village is at the mercy of Lake Michigan for some low lying areas within the Village Parks, other areas need to be addressed. Specifically, the erosion of the fishing pier and the reshaping of Elberta Beach.

Funding of the Parks. For many years, off-road driving on the dunes and beach has posed a safety hazard for people, plants (some common, some unique to this ecosystem), and animals. Drivers attempting to scale the bluff with their vehicles cause erosion that can undermine the stability of the dune in addition to destroying plant life there. The lack of a designated, graded roadway means that the farther ends of the Elberta beach are effectively accessible only to those with four-wheel-drive vehicles, and even those vehicles sometimes get stuck in the sand drifts and must be towed

out at the owners' expense. In the fall of 2012, after several unsuccessful attempts to control off-road vehicle traffic, the Village Council along with the Sheriff Department and the DNR determined that improving Lakeside Boulevard would be a means of protecting this designated Critical Dune area while also improving access to the beach for residents and visitors.

Village Recreation Inventory Details

The inventory of recreation within the Village was conducted via aerial photo interpretation and on-site visits. Figure 9 shows the location of recreation within the Village boundaries. Below is a list of every park, including a description and the amenities available at each. The Accessibility Assessments were based on criteria provided in the Michigan Department of Natural Resources' Guidelines for the Development of Community Park, Recreation, Open Space, and Greenways Plans. All playground equipment in Village parks is maintained by Elberta Parks and Recreation, volunteers, and DPW staff.

Public Parks:

1. Elberta Historic Waterfront Park

This Neighborhood Park is located on 5.6 acres on the shores of Betsie Bay and includes over 1,200 feet of scenic water frontage. This park's amenities provide for activities such as fishing, picnicking, fitness, and group gatherings that include: weddings, reunions, outdoor theater, and other gatherings. Development of this park was made possible through 4 grants awarded in 1998 and 1999. Two MNRTF grants (TF98-033 and TF99-014) provided funding that allowed for the development of elements such as: utilities (water & sewer), park furnishings, landscaping/plantings, a picnic pavilion, performance pavilion, entry road and parking lot (54 spaces), site lighting, viewing event deck, landscaping, and drinking fountain. The fishing deck was procured through the Great Lakes Fisheries Trust. The Traverse City Rotary Charity provided the grant for the handicapped-accessible children's playground. The match was in-kind, with community labor. No tax dollars were used to build this park.

Recent improvements include a bicycle rack, a scenic spot bench made in Michigan from recycled materials, new park signage, and six signboards with historical information and pictures of the land's prior use and Village history provided by the Elberta Parks and Recreation. A fitness circuit was created in 2017 with the Building Healthy Communities Grant Funds and matched with in kind labor from the Village DPW and volunteers. Several pieces of fitness equipment were relocated from Anderson Park to Waterfront Park as part of the fitness circuit installation.

Waterfront Park is maintained with funds from the rental of the Lifesaving Station with the labor of the Village DPW, volunteers, and contractors. All the elements built with funding from the MNRTF grants are in good condition. The fishing pavilion is in need of repair, as high water levels have eroded the ground beneath the structure.

Accessibility Assessment = 5

Facilities include:

- a. Covered Picnic Pavilion housing 12 picnic tables
- b. Two parking lots including handicapped parking
- c. Fitness circuit with exercise equipment for varying ages and abilities
- d. Children's playground with bark bedding
- e. Swing set with 6 swings and 1 handicap swing provided by Park & Rec
- f. 1 bicycle rack on a concrete pad
- g. Lighted paved paths/trails accessible to the handicapped
- h. 11 park benches
- i. Outdoor amphitheater
- j. Covered fishing pavilion
- k. Life Saving Station which is available for rent for group gatherings
- l. Restrooms (inside Life Saving Station building; not accessible to general public)
- m. Drinking fountain
- n. Informative historical signboards
- o. Future: Public restrooms
- p. Future: Historical display of remnants of iron foundry
- q. Future: Additional fitness equipment

(For a detailed map of this park, please see Appendix A.)

2. Elberta Lake Michigan Beach

This Community Park is located on beautiful Lake Michigan and includes just over one mile of public beach access. Along with beach access this park is often used for fishing, from the beach and from the pier.

Accessibility Assessment = 1

Facilities include:

- a. Nonfunctioning primitive restrooms
- b. Pier accessible for walking and fishing
- c. Scenic Overlook parking
- d. Handicapped parking at beach access
- e. Boardwalks
- f. Signage prohibiting motorized vehicles in Critical Dune areas
- g. Future: Restrooms
- h. Future: Road extensions
- i. Future: Universally accessible path from parking lot to pier and beach
- j. Future: Picnic pavilions
- k. Future: Additional parking lots

(For a detailed map of this park, please see Appendix A.)

3. Dudley Penfold Memorial Park (Penfold Park/Elberta Marina)

This 4-acre Neighborhood Park is located in the heart of Elberta on Betsie Bay and is directly accessible from M-22 and the Betsie Valley Trail.

Since 2002, Penfold Park has hosted the Elberta Farmers' Market on Thursday mornings from May to October.

Penfold Park was designated a bus stop for the Benzie Bus in 2015. In 2019, a dedicated glass enclosed bus stop shelter was constructed near the entrance to the park from M-22.

Construction of an accessible kayak launch with a public restroom was begun in the summer of 2019 and will be completed in 2020. When completed, the amenities will be fully accessible with a paved path connecting the handicap parking area, boat launch, restroom, information kiosk, and seating area. The restroom building includes two accessible unisex restrooms connected to the Village water and sewer systems, a drinking fountain with a water bottle filling station, and a covered concession area. The information kiosk will feature exhibits on local history and culture. The kayak launch, restroom, and accompanying amenities were funded by grants from the MNRTF, the USDA, and Traverse City Rotary Charities.

Accessibility Assessment = 1 (current), 5 (when improvements complete)

Facilities include:

- a. Covered picnic pavilion
- b. 9 picnic tables including one handicap accessible picnic table
- c. 3 grills
- d. Wooden playground train surrounded by bark bedding
- e. Boat launch suitable for shallow fishing boats, kayaks, and canoes
- f. Pedestrian bridge to Frankfort Avenue
- g. Access to the Betsie Valley Trail
- h. Trailhead parking
- i. Public Port-a-Jon's; one standard, one universally accessible
- j. Bus Stop Shelter for the Benzie Bus
- k. Wetland area that hosts frogs and other wildlife
- l. Little Community Garden (est. spring 2014)
- m. Future (to be completed in 2020): Universally accessible kayak launch, two ADA unisex restrooms, drinking fountain with water bottle filling station, concession area, paved pathways, paved handicap parking, benches, culture and history kiosk.

- n. Future: Paved entrance drive
- o. Future: Additional picnic tables

(For a detailed map of this park, please see Appendix A.)

The wooden footbridge was designed and built by volunteers, funded by Elberta Parks and Rec. The Pavilion and wooden playground train were funded by Parks and Rec along with the Grand Traverse Band of Ottawa and Chippewa Indians. The train is maintained, and periodically restained by volunteers with materials purchased by Parks and Rec. In September 2016, volunteers revamped the boat launch donation box with a new latch, lock, and paint, with “\$5 Suggested Donation.”

4. The Community Building

This Neighborhood Park sits at the south end of the Village on several acres that were originally part of the local school property. The property was split and the school side was sold. The remaining portion is used for sports and a public meeting room and classes/party rental.

Accessibility Assessment = 2

Facilities include:

- a. The Community Building
- b. Restrooms
- c. Baseball field
- d. Bleachers
- e. Available to rent for classes, parties or meetings

The Community Building was funded through a grant and fundraising efforts of the Elberta Economic Development Community. The building can be rented for parties, meetings, classes, or any small gathering. The ball diamond, bleachers, and dugout are maintained by the Frankfort–Elberta Athletic Association.

5. Tot Park

This ¼ acre mini-park is located within the residential area of the Village. It serves as a local playground for Village residents. New bark bedding was added under the swingset in 2017.

Accessibility Assessment = 1

Facilities include:

- a. Sandbox
- b. Swing set
- c. Slide

- d. 1 picnic table
- e. Park bench
- f. Fencing on three sides
- g. Future: Early childhood appropriate playground equipment
- h. Future: Covered pavilion/gazebo

6. Veterans Park

This ½ acre mini-park is maintained as open space within the residential area of the Village. There are no amenities or facilities to speak of in relation to recreation. Accessibility Assessment = 1

Future facilities include:

- a. Gazebo
- b. Veterans Memorial Garden
- c. American Flag with lighting
- d. Handicap Parking

7. Anderson Park

This ½ acre mini-park located within the residential area of the Village and is used as a playground. Accessibility Assessment = 1.

Facilities include:

- a. Basketball court with two hoops and lighting
- b. Fencing on all sides
- c. Future: Park sign
- d. Future: Tennis/pickleball court
- e. Future: Resurfaced basketball court
- f. Future: New basketball backboards, hoops and nets
- g. Future: Benches

8. Betsie Valley Trail

This Trail Park extends approximately 23.5 miles throughout Benzie County. It extends into the Village of Elberta for a ½ mile. This trail is widely used for both hiking and biking. It serves as safe pedestrian and bicycle connection between Elberta and Frankfort for shopping and errands as well as recreation, and to other communities and parks within Benzie County. It is hoped that this trail will be extended along the south shore of Betsie Bay and on to the beach, if funding is

obtained. Betsie Valley Trail is a designated trail that was the old Ann Arbor Railroad Corridor. Although section D was not in the original funding, the trail is designated and will be finished when funding becomes available.

9. Elberta Dunes South Natural Area

The former site of the Allmendinger farm and later Thorpe residence. The Thorpe family gave this 58-acre parcel to the Grand Traverse Regional Land Conservancy to hold in trust with the intention that it eventually be acquired by the Village of Elberta. From the GTRLC website: *“Protected in 2010, Elberta Dunes South features majestic glacial moraines, towering dunes, untouched forests and a 1/4 mile of sandy Lake Michigan beach. A hiking trail leads to sweeping views of Lake Michigan and the surrounding Betsie Valley. This property hosts the Pitcher’s Thistle, listed federally and by the state as a threatened species; the Lake Huron Locust, a state threatened insect; and Piping Plovers, a federally listed endangered species, have used this part of Lake Michigan’s shore for nesting.”* With the help of Natural Resources Trust Grant TF08-034, the Village took possession of the property in early 2011.

Facilities include:

- a. Nature trails
- b. Welcome signage and informational kiosk
- c. Parking lot
- d. Natural history signage kiosk
- e. Mutt mitt station
- f. Two benches located at scenic points along the trail
- g. Future: Viewing platform
- h. Future: Trail maintenance tool shed with covered seating area

Private Amenities:

(For a detailed map of the marinas, please see Appendix A.)

1. *Betsie Bay Marina* This privately owned marina is located on Betsie Bay and includes 56 slips; a boat launch; refueling station; convenience store; and a boat storage and maintenance shed.
2. *Betsie Shores Dockominiums* This privately owned marina is located on Betsie Bay. 42 slips available.
3. *North Star Marina* This privately owned marina is also located on Betsie Bay and includes 24 boat slips.

Inventory of Existing Recreational Boating Facilities

The Village has two public water access locations for boaters. The Elberta Marina/Mini Pond in Penfold Park has an existing improved facility for small boat launch into Betsie Lake. Elberta Beach provides unimproved water access to carry boats to Lake Michigan. Private boating facilities are provide by the above described.

The Elberta Marina Boat Launch in Penfold Park provides a concrete boat ramp with a 30 foot long dock parallel to the boat ramp to allow boat handling. The boat launch also provides a convenient place for kayaks and canoes to pull out after paddling down the Betsie River. The boat launch has an honor box with a suggested donation of \$5 for use of the facility. Parking for the boat launch is available both at the launch and at nearby parking areas for the Betsie River Trailhead and Penfold Park. The boat launch entrance from M-22 is marked by two propellers painted white. The Penfold Park map shown in Appendix A shows the location of the boat launch.

The Penfold Park boat launch primarily serves small fishing boats. While most boats launched from Penfold Park are used for fishing in Betsie Lake, boaters can transit Betsie Lake into Frankfort Harbor and Lake Michigan. Starting in 2020, Penfold Park will also host an universally accessible kayak launch with additional amenities described above.

Located in the center of Elberta Village on M-22, the boat launch serves both locals and visitors to the Frankfort-Elberta area. The Penfold Park Boat launch is used as an alternative to the City of Frankfort Municipal Boat Launch also located on Betsie Lake. On peak fishing weekends, the Elberta Marina in Penfold Park can become congested with parked vehicles and trailers. To date, boaters have been considerate in their parking and no incidents or complaints have been reported.

In 2019, Betsie Lake water levels, driven by high water levels in Lake Michigan, flooded Penfold Park boat launch and parking area for most of the boating season, making the facility hard to use. There are no specific plans to address the high water at the boat launch.

Dredging

During periods of low water (i.e. 2013-2016) plans were made to dredge portions of Betsie Lake. The Penfold Park mini-pond was not included in those plans primarily due to the submerged logs and lumber left over from the lumber mills located on the site in the 19th Century. Even in low water level years, the Penfold Park water depth was sufficient to allow the passage of small fishing boats, kayaks, and canoes into the connecting waterways.

Annual Maintenance Schedule

The Penfold Park Boat Launch has no specific annual maintenance needs. The dock is repaired and boards are replaced by the Village DPW as necessary using Village General Funds allocated to general Penfold Park maintenance. In the last few years, this has amounted to less than \$500 per year in materials and labor. Volunteers maintain the honor box and paint the propellers as necessary. The Village Parks and Recreation Commission purchases the paint from fundraising proceeds.

County Recreation

Recreation outside the Village Boundaries is abundant in Benzie County. Figure 10 shows the Village's proximity to many state and federal lands, including: Sleeping Bear Dunes National Lakeshore; Pere Marquette State Forest; Betsie River State Game Area; The Nature Conservancy lands; and other State of Michigan Lands. Proposed recreation throughout Benzie County was identified through public input sessions for the Northwest Michigan Regional Non-Motorized Strategy. The resulting maps can be viewed online at: <http://www.networksnorthwest.org/planning/transportation/regional-non-motorized-comprehensive-strategy/>. Though completing the Beach-to-Beach Trail in the Village of Elberta was identified as a proposed route, those input sessions did not select it as a priority. Many Village residents and members of the Parks & Recreation Commission, however, desire this connection.



Figure 10 – Village Recreational Map

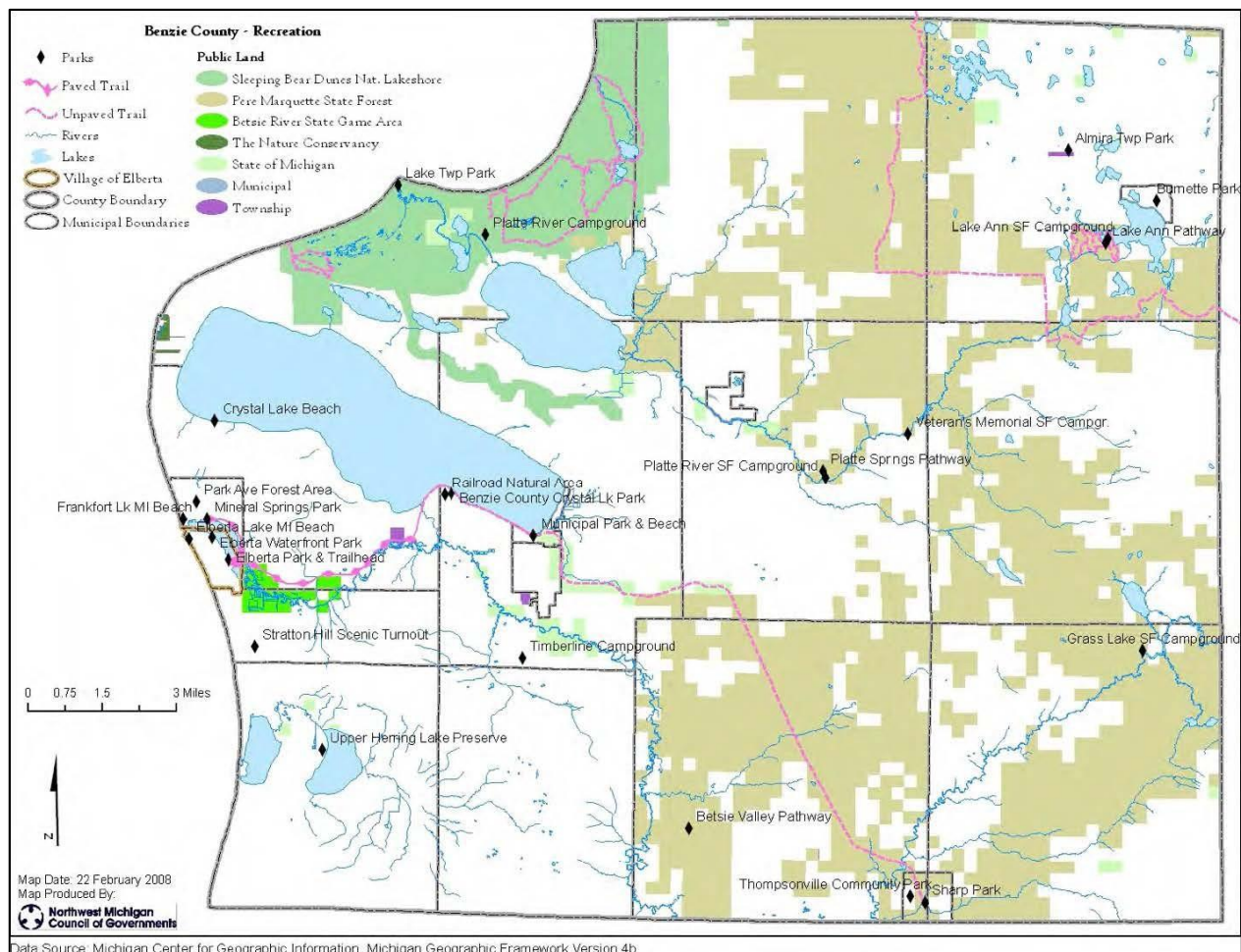


Figure 11 - County Recreation Map

Description of the Planning and Public Input Process

One public input meeting was held October 7, 2019, in the Village of Elberta at the Community Building on First Street. A second session was held before the regular council meeting on December 19, 2019. The draft plan became available to the public for viewing on November 13, 2019, both on the Village website (www.villageofelberta.com) and in hard copy at the Village Office. A notice regarding when and where the draft plan would be available for viewing was put in the Benzie County Record-Patriot (see page 32). The public input workshop on October 7 offered residents and other members of the public a chance to share their ideas about recreation within the Village. Notification of the workshop meeting was posted at the Village Office, the Post Office and the Community Building a couple of weeks prior to the meeting date. At the workshop maps showing current recreation were available for viewing along with the draft plan. Questionnaires, that were sent out to all Village residents at the end of September 2019, were made available to the workshop attendees. About 10 people attended the workshop on the 7th and offered

their input. The results of the public input workshop and official minutes can be seen summarized in Appendix C. The results of the workshop were incorporated into the November 13, 2019 draft. A public hearing on the draft was noticed for the December 19, 2019 Council Meeting. Notice of this meeting was placed in the local paper and posted at the Village Office and Post Office five weeks prior to the meeting date. Comments and questions were received by the Village President and the Village Office prior to the end of the day on December 19. All comments received were considered in finalizing the plan. The plan was presented for adoption to the Village Council during the December 19, 2019, regular meeting. The Elberta Village Council voted to adopt the recreation plan.

Goals, Objectives, and Action Program

Goal: The Village of Elberta seeks to provide its residents and visitors access to recreational opportunities that enhance the character and setting of the Village.

Objectives:

PROMOTE CONNECTIONS BETWEEN RECREATION AREAS Connect Elberta Lake Michigan Beach and the City of Frankfort’s Lake Michigan Beach with a trail extension from the Betsie Valley Trail (Segment D). This includes improving the trailhead parking area on M-22 to provide better accessibility for the disabled and access to the Village downtown area. Promote the connection between the State Game Area and Elberta Beach/parks via the Betsie Valley Trail. Promote the economic benefits of linking communities by water and land trails. Improve and create sidewalks and designated bike lanes to connect all Village recreation areas via an intra-Village safe route for bikes and pedestrians.

Action Strategy: (2020–2024) Utilize Major and Local Street funding to create safe route for bikes and pedestrians from Penfold Park to Elberta Dunes South via Lincoln Avenue. This will be a combined effort of the Parks & Rec Plan and the Village Streets Capital Improvement Plan.

IMPROVE BEACH ACCESS AND SAFETY. Gravel, grade, and clearly define a section of Lakeside Blvd 2,800 feet long and 50 feet wide at its widest point to create parking for approximately 48 additional vehicles and thereby improve access for auto, pedestrian, handicapped, and bike traffic. Limit parking at the entrance to the road and make this opening stretch narrow to preserve as many trees as reasonable and to calm traffic for the safety of families and children. Install signage designating where motorized vehicles are prohibited.

Demarcate edge of roadway on all sides to discourage off-road vehicular traffic. Add picnic facilities, Mutt Mitts, more trash receptacles, and restrooms at the entrance to Elberta’s Lake Michigan Beach. (Future: picnic tables, trash receptacles, and restrooms at the end of Lakeside Blvd.) A long-term objective: provide year-round access to the beach by either creating a new entrance drive and extending the Beach-to-Beach Trail from the Historic Waterfront Park, with the cooperation of property owners.

Action Strategy: (2020–2024) Work with the Grand Traverse Regional Land Conservancy to apply

for the MNRTF grant and any other available grant opportunities.

UPGRADE ELBERTA DUNES SOUTH. Upgrade Elberta Dunes South trail by adding trail signs, benches and a lookout platform.

Action Strategy: (2020–2024) Continue to work with the Grand Traverse Regional Community Foundation, which is acting as a fiduciary for Elberta Dunes South, and ensure the \$4000/yr generated by the endowment for maintenance is maximized by securing volunteer effort for semi-annual trail clean-up.

PROVIDE PERMANENT RESTROOM FACILITIES. Build permanent restrooms in Waterfront Park and at Elberta Beach.

Action Strategy (2020-2024): Funding from donations and grants. See Elberta Beach Improvements in Appendix B.

ENHANCE PLACEMAKING THROUGH SIGNAGE/WAY-MARKING/HISTORICAL PROJECTS. Protect and stabilize the remains of the Foundry Building in advance of repurposing for community events, theater, historic site, etc. Maintain and continue restoration/preservation projects in the Elberta Life Saving Station interior and exterior. Continue collecting items for historical display in ELSS.

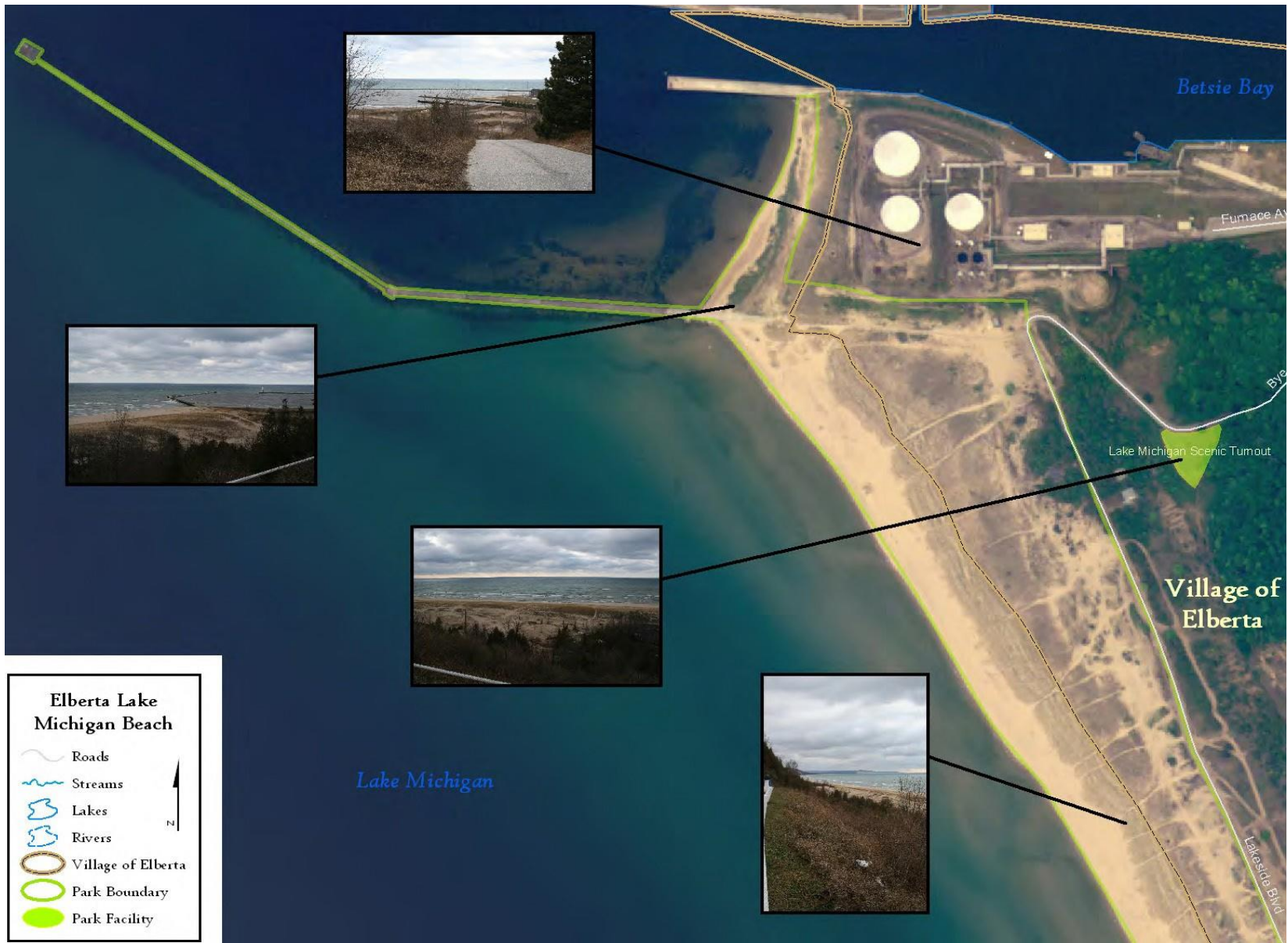
Action Strategy (2020-2024): Seek other funding from donations and grants specified for historic restoration and cultural preservation.

DEVELOP SUSTAINABLE REVENUE SOURCES FOR PARK PROJECTS AND MAINTENANCE Build endowments into fundraising campaigns for various projects. For example, \$4000 a year comes from the Elberta Dunes South Endowment Fund and is meant to be spent on EDS maintenance. Develop other revenue streams through concessions and regular annual fundraising drives, which could include the beach boardwalk planks and picnic table name, and memorial bench fundraisers.

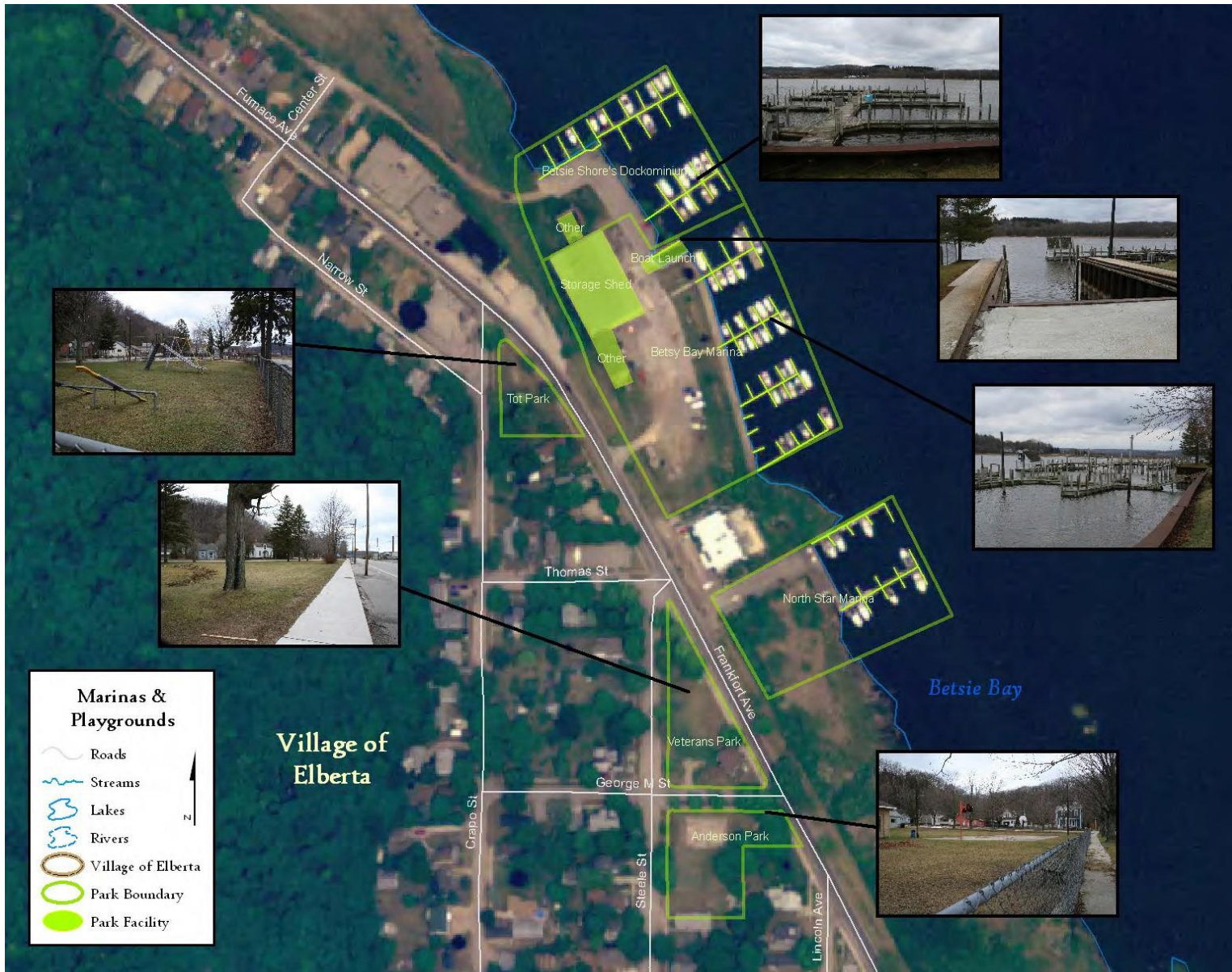
Action Strategy (2020-2024): Consult with Grand Traverse Regional Community Foundation. Seek grant writers in the community.

Appendix A: Detail Maps of Village Parks

Park Map	Page
Waterfront Park.....	A-2
Elberta Lake Michigan Beach	A-3
Dudley Penfold Memorial Park	A-4
Public & Private Marinas and Neighborhood Playgrounds	A-5
Elberta Dunes South Nature Trails	A-6









Appendix B: Elberta Beach Improvement Plan

The Village of Elberta has partnered with the Grand Traverse Regional Land Conservancy to have Fleis and Vandenbrink Engineers develop an Elberta Beach Improvement Plan.

This plan increases parking and beach access along Bye St./Lakeside Blvd. while controlling vehicle traffic to reduce both damage to the Lake Michigan critical dunes and disturbances to adjacent private property. In addition to improved access, additional beach amenities are provided including rebuilding of a picnic pavillion on a site formerly used for that purpose, constructing restroom facilities, and creating universal access paths onto the beach and the Frankfort Harbor South light pier.

The development estimate and engineer's site plan are included below.

Estimate of Probable Cost for Elberta Beach Improvements

North Parking Area (Main Beach Area) **\$69,500.00**

Includes:

Level, gravel and grade parking area, parking bumpers and split rail fencing.

Main Beach Area **\$269,560.00**

Includes:

Sidewalk connecting pavilion to bathroom, paved handicapped parking spaces, ADA pathway from parking lot to the pier and pathway bench.

South Parking Area **\$120,000.00**

Includes:

Gravel and grade parking area, parking bumpers and split rail fencing.

Additional Costs at South Parking Area **\$6,000.00**

Includes:

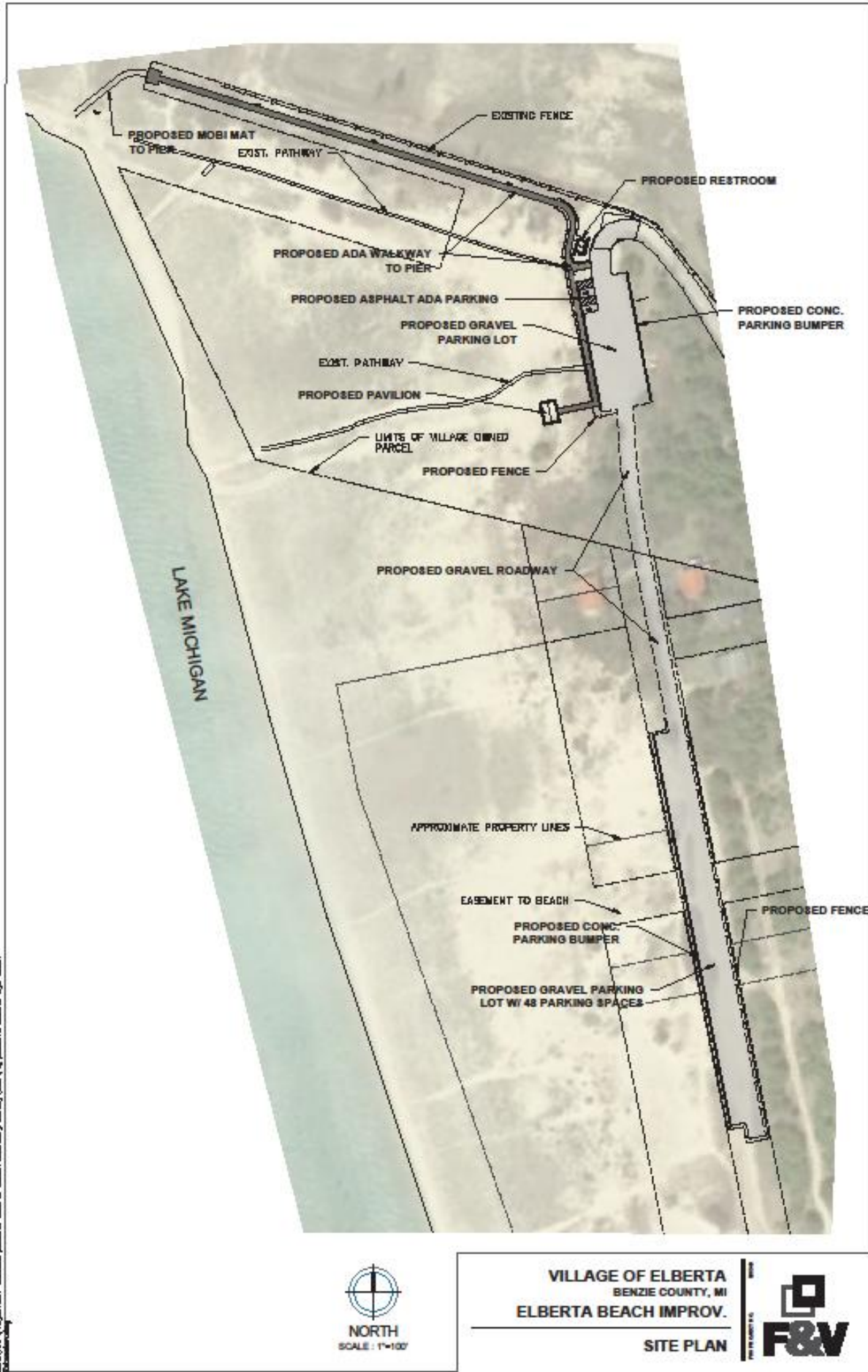
Guardrails for existing drive offs from Lakeside Blvd. to prevent driving on private

Bye Street (Village Funded) **\$20,000.00**

Includes:

Gravel, grade and widen to 20ft.

MNRTF Grant Funds	\$300,000.00
GTRLC Match	\$162,060.00
Parks & Rec. Contribution	\$3,000.00
Village Contribution	\$20,000.00
Total Cost	\$485,060.00



Appendix C: Public Input Documentation

Document	Page
Public Input Survey.....	C-2
Public Input Workshop Summary	C-4
Survey Responses	C-6
Summary of Responses Received From Public Review & Comment Period.....	C-8
Legal Notices	C-10
Public Hearing Minutes	C-12

Public Input Survey Distributed in September 2019

Parks and Rec Public Survey for the 2020-2025 Village of Elberta Recreation Plan

Every five years, the Village updates its Recreation Plan. We need your input to create the new plan for 2020-2025. Please take a few minutes to answer these questions. Your input is appreciated and needed by October 15, 2019. Means of return can be: the Village Drop Box, email clerk@villageofelberta.com, or regular mail PO Box 8 Elberta Mi 49628. Thank you for your help!

1. Please tell us the number of people in your household and their ages.
2. All Parks and Rec projects are funded by volunteer fundraising. What type of fundraisers or fundraising events would you attend or suggest that Parks and Rec do?
3. How do you use each of Elberta's Park areas, and how often?

The Historic Waterfront Park

Elberta Beach

Penfold Park (Betsie Valley Trailhead/Marina)

Tot Park (Corner of Crapo St. & Frankfort Ave.)

Veterans Park

Anderson Park (Basketball Court)

Elberta Dunes South

The Community Building/Baseball Field

4. What changes would you like to see in Elberta's parks (equipment, maintenance, facilities, etc.)

5. What could the Village do in the next five years to make Elberta an even better destination for recreation?

6. Would you be willing to participate in workdays? Fundraising events? Would you like to join the Parks and Recreation Commission?

- I'd like to participate in workdays
- I'd like to join the Parks and Rec Commission
- I'd like to help with Historic Preservation
- I'd like to help with projects at _____ park
- I'd like to participate in Life Saving Station maintenance
- I'd like to help put on a fundraising event
- I'd like to help with Betsie Valley Trail projects

Please share your contact information if you checked any of the boxes above.

Name _____

Phone Number _____

Email Address _____

Summary of the Public Input Workshop Session held on October 7, 2019

Ten members of the community attended the Public Input Workshop. One survey was returned at this time.

The 2014-2019 Recreation Plan was used as a jumping off point in discussion. This plan has an inventory of our parkland, maps and an overview of the area in general. Some projects listed in it have been completed, some are in process. Ideas for the Recreation Plan by park, starting with Elberta Beach.

Elberta Beach. The Village has been working with Grand Traverse Regional Land Conservancy for the past three years to develop an improvement plan for Elberta Beach. The goal is to apply for a MNRTF Grant in the Spring of 2020. The plans that were in place for last year's application were discussed. Public input included:

- A heavy emphasis on promoting more handicap accessibility by extending the first parking lot west and connecting Furnace Ave. to Bye St./Lakeside Blvd. Currently, Bye St. is a very narrow and steep road which provides the only vehicle access to the to the beach parking lot.
- Suggestion to turn that section of Bye St between the overlook and beach parking area into a stairway.
- Clearly marking public access points for both of the proposed parking lots and defining each lot with large rocks or very secure split rail fencing was expressed as an important need to avoid misuse of the beach area.

Historic Waterfront Park. Suggestions included:

- Construct a public restroom facility with an area for historic pieces, photos and information was suggested.
- Restore a section of the Historic Roundhouse that is still in good shape and tearing down the unsafe parts and selling the bricks as a fundraiser.
- Paint the exterior and continuing routine maintenance of the Life Saving Station.

Tot Park. Participants would like to see updated playground equipment installed.

Veterans Park. A Veterans Memorial Garden with parking along Steele St. was well received.

Anderson Park. Suggestions included updating the Basketball Court, adding new benches, and adding a Pickle Ball/Tennis Court.

Penfold Park. Aside from the new construction of an ADA bathroom and kayak launch, paving the drive and parking lot was a priority along with extending the Betsie Valley Bike trail through the park, down Frankfort/Furnace Ave. to the Historic Waterfront Park and eventually to Elberta

Beach. Adding Benches, garbage cans, dog waste stations and historic signs along the way.

Elberta Dunes South. Suggestions, including a viewing platform, trail markers and possibly a Port-a-Jon at the parking lot in the future.

The Community Building/Baseball Field. The community would like to see the parking area paved.

Survey Responses

1. 2 Adults aged 54 and 56 suggested holding short fun runs/walks to raise funds for Parks and Recreation. They visit nearly every park about two times a week and would like more exercise equipment at Waterfront Park and better parking at the beach.
2. 2 Adults aged 67 and 68 suggested “Doing away” with the smaller parks (Anderson and Tot) and would like to see the basketball court and Tot playground equipment moved to the Waterfront Park because it is a great park and can be even greater. They like to hike Elberta Dunes South and visit the beach when the conditions are nice. Their grandchildren use the ball field, basketball court and Waterfront Park several times a week during the summer.
3. 2 Adults aged 58 suggested horse and carriage rides at Waterfront Park as a fundraiser. They use that park several times a month and are happy to be able to take their dogs there. They asked if there is room for a fenced Dog Park there. They also suggested a pickle ball court at Anderson Park, improved trails at Elberta Dunes South and maintenance and expansion to walkways at Elberta Beach. Volunteered to help with any projects in the Village. Nancy Starr
4. 2 Adults aged 64 and 74. Fundraising ideas included, music at the amphitheater, fishboil at the park or beach and regular Historic presentations at the Life Saving Station. This couple and/or their grandchildren use each park to its fullest and cannot wait for the bike trail to extend from Penfold Park to the beach. They would like to see the playground equipment updated at Tot Park and add a Pickle ball court to Anderson Park along with updating the basketball court. The response to “What could the Village do in the next five years to make Elberta an even better destination for recreation?” was: Get the bike trail to beach to extend on the flat side near the water (Furnace Ave.) and open road on flat to eliminate that hill down to beach. Keep the overlooks for that road (Bye St.) Sonia Clem volunteered to help with fundraising, workdays, Parks and Rec and Betsie Valley Trail projects.
5. A family with age ranges of 73, 41, 28 and 7 with fundraising ideas that include, children’s events, amphitheater activities (music, movies) and craft fairs. This family uses the parks and their amenities while walking their dog. They would like to see updated playground equipment at Tot and Anderson Parks and children’s activities in the summer at the Waterfront Park.
6. 2 Adults aged 58 would like to see the Solstice Festival brought back and more events held at the Beach and in the Parks. They hike, swim, bike, surf, longboard, free dive and skateboard in the corresponding parks in the Village of Elberta. They would like to see better access to the beach and promote trails, offer bike rentals and have trail signs installed. Larry and Nancy Bordine, have volunteered to help with projects related to the beach and the Betsie Valley Trail.

7. A family with ages ranging from 47, 44, 11 and 7 would like to see the Solstice Festival come back as a fundraiser. The kids use the Waterfront Park and the Ballfield 4 or 5 times a year. They hike at Elberta Dunes South and would like the parking expanded down Lakeside Blvd. at Elberta Beach. Casey Johnson volunteered to help with any beach project.
8. 2 Adults aged 62 and 72 suggested direct mail fundraisers to seasonal residents, raffles and sale of Elberta-themed merchandise. They often walk to Waterfront park to use the exercise equipment and watch their grandkids play on the equipment. They walk and swim at the beach and hike with their dog at Elberta Dunes South. They would like to see a tennis court somewhere, bathroom facilities at Elberta Beach and Waterfront Park, improvements to the Life Saving Station and see more scheduled events/concerts at the Waterfront Park. The response to, “What could the Village do in the next five years to make Elberta an even better destination for recreation?” is: Fix the remaining sidewalks so that they are safe for walkers and bike riders, make the boat launch area more useable/inviting, use the unused part of Anderson Park for a garden/fountain/labrynth- something beautiful. Margaret (Peg) Hill, volunteered to help with projects schedule dependent.
9. 2 Adults aged 66 and 68 would like to see a letter campaign to potential donors (Sand Products, Tribe, Rotary, etc.) to aid with park and beach improvements. They would love to see Elberta Beach improvements developed and have volunteered to help with Elberta Beach improvements. Jon and Sue Keillor.
10. 2 Adults aged 77 and 78 suggested having participation events (Biking, running) and historical walks (Holiday events) as fundraisers. This couple fishes at the Waterfront Park in the fall and goes to the overlook and beach on a weekly basis. They would like to see more people using the facilities the Village has and would like to help with Historic Preservation, Life Saving Station Maintenance, fundraising and Betsie Valley Trail projects. Art Moseler.
11. A family with age ranges of 60, 61, 26, and 23 would visit Elberta beach quite frequently in years past, the water levels prevented them this year. They often use the Betsie Valley trail and when the kids were younger they used the basketball court at Anderson Park. Barbara Wirtz volunteered to help with any project as long as she knew in advance so she could come up to participate. Would like to encourage non-industrial commerce in the future.
12. A family ranging in ages from 53 to 16 would like to attend and help put on fundraisers in the community, especially the Solstice Festival. They take daily walks for photography purposes at Waterfront Park, Elberta Beach and launch their kayaks from Penfold Park. They would like to see Elberta beach cleaned up and a bathroom facility and possibly a food/beverage truck down there too. Lisa Canada.

Summary of Responses Received from Public Review and Comment Period

No comments were received via written letter or email during the public review period. The minutes from the Parks and Recreation Commission are attached along with a summary of the public comments from the December 19, 2019 public hearing for the 2020-2024 Recreation Plan.

Village of Elberta Parks and Recreation **Meeting Minutes** **Thursday December 12, 2019 6pm**

Call to Order: 6:04pm

Attendance: Sue Oseland, Bill Soper, Jen Wilkins and Grace Williams

Guests: None

Council Liaison: Bill S.

Approval of November 15, 2019 Minutes: Changes: Remove "September will start in" under EDNA

Motion 1st: Sue Oseland Motion 2nd: Grace Williams Ayes: 4 Nays: 0 **MOTION PASSED**

Approval of December 12th, 2019 Agenda: Changes: None

Motion 1st: Bill Soper Motion 2nd: Sue Oseland Ayes: 4 Nays: 0 **MOTION PASSED**

Bank Statements/Financials received: Copy of financial reports received

Correspondence: Email from Jake Bournay from GTRLC

Committee Reports

***Elberta Dunes South Trail (Bill S.):** New GTRLC contact for EDNA is Jake Bournay jbournay@gtrlc.org

***Beach:** The individual that ran into the road barricade is being prosecuted.

***Parks/Grant Updates (Jen W.):** Tot Park, Anderson and Ball Field: Good for Winter. Waterfront Park:

Getting an estimate for rip rap at the shoreline that eroded due to high water – still no estimate.

Penfold: Electric is now hooked up so the project can continue.

***Elberta Historical Preservation:** Nothing to report

New Business:

1. **2020-2024 Recreation Plan draft discussion, edits and additions noted. Motion to approve Recommendation Resolution #12-2019 for adoption by the Village Council with noted changes to be presented to Council. See Attached Recommendation Resolution.**

Motion 1st: Bill Soper Motion 2nd: Grace Williams Ayes: 4 Nays: 0 **MOTION PASSED**

Public Comment: None

Adjournment: Motion 1st Grace Williams Motion 2nd Sue Oseland Time: 7:00pm Ayes: 4

**Village of Elberta
Public Hearing
2020-2024 Recreation Plan**

December 19, 2019

Call to Order 6:34pm

Roll Call: K. Holmes, J. Wilkins, B. Soper

Summary by J. Wilkins, Village President:

No letters/e-mails were received regarding this project.

Comments from Audience:

- Diane Tracy, Frankfort commended the Village on the Recreation Plan. She is with the Benzie Aquatic Center group looking forward to an aquatic center/indoor walking track in the County.

No additional comments from public.

President Wilkins discussed a few additional typographical errors that need correcting and mentioned changes/additions made since the first draft was printed.

The Village Parks & Recreation Committee recommends adoption.

Closed Public Hearing at 6:51pm.

Benzie County Record-Patriot Legal Notices

0032 Public Notices

**NOTICE OF PUBLIC HEARING
VILLAGE OF ELBERTA**

There will be a public hearing and meeting of the Elberta Village Council held on December 19, 2019, 6:30 pm at the Community Building, 401 First St. Elberta, MI 49628. The regular council meeting will follow this public hearing with action taken at that time. The purpose of the public hearing is to accept public comments concerning the final draft of a proposed five-year recreation plan before the plan is presented to the Elberta Village Council for adoption. The proposed recreation plan will be available at the Village Office, 151 Pearson St. Elberta, MI 49628, during regular business hours, and on the website.

Maryanne Goodman
Village Clerk
Nov. 13, 20, 27, 2019
Dec. 4, 11, 18, 2019

0032 Public Notices

NOTICE OF PUBLIC HEARING

VILLAGE OF ELBERTA

There will be a public hearing and meeting of the Elberta Village Council held on December 19, 2019, 6:30 pm at the Community Building, 401 First St. Elberta, MI 49629. The regular council meeting will follow this public hearing with action taken at that time. The purpose of the public hearing is to accept public comments concerning the final draft of a proposed five-year recreation plan before the plan is presented to the Elberta Village Council for adoption. The proposed recreation plan will be available at the Village Office, 151 Pearson St. Elberta, MI 49629, during regular business hours, and on the website.

Maryanne Goodman
Village Clerk

Nov. 13, 20, 27, 2019
Dec. 4, 11, 18, 2019

Copy of Minutes from Public Meeting held December 19, 2019

MINUTES

Regular Meeting of the Elberta Village Council

401 First St (Community Building) Elberta

December 19, 2019

7:00 PM

Call to Order at 7:00 pm by President Wilkins.

Roll Call: Present: Holly O'Dwyer, Bill Soper, Ken Holmes, Jennifer Wilkins. Absent: Barb Reichert.

Minutes: November 21, 2019 minutes corrected to reflect approval of minutes of October 17, 2019. Motion by Wilkins, seconded by Soper to approve Council minutes of November 21, 2019 with correction. All ayes. Motion Carried.

Agenda: Deleted New Business items #2-4. Motion by Soper, seconded by O'Dwyer to approve amended agenda. All ayes. Motion Carried.

Conflict of Interest: None noted

Correspondence:

1. Received brochure from Fiscally Ready Communities Training through MSU Extension.
2. Received Village 2020 Council and Committee meeting schedule.

Public Comment on Agenda: Co-Chairperson of ECFM suggested Council consider the individual non-profits entities when setting park and facility rental rates.

Approval of Bills: Motion by Holmes, seconded by Soper to approve the check register in the amount of \$19,861.72 as presented. Roll Call: O'Dwyer, aye; Soper, aye; Holmes, aye; Wilkins, aye; Reichert, absent. Motion Carried.

Financial Report: - Received.

Old Business: Elberta Community Farmer's Market Contract. Motion by Wilkins, seconded by Holmes to approve ECFM Contract as presented. All ayes. Motion Carried.

New Business:

1. VOE Recreation Plan 2020-2024, Motion by Holmes, seconded by Wilkins to adopt Resolution 2019-05. Ayes; O'Dwyer, Soper, Holmes & Wilkins. Nays; none. Absent; Reichert. Resolution approved.
2. Revision of Rental Facility rates, much discussion regarding fees charged for non-profits and differing levels of non-profits, churches, etc.; also whether or not the liability insurance request is needed. Soper requested the issue be tabled, Holmes concurred.
3. Contract with Scott Little for Water System Operator, motion by O'Dwyer, seconded by Wilkins to approve contract with name correction. Roll Call: Roll Call: O'Dwyer, aye; Soper, aye; Holmes, aye; Wilkins, aye; Reichert, absent. Motion Carried.
4. Motion by Wilkins, seconded by O'Dwyer to accept Clerk's resignation, and declare

position vacant as of January 1, 2020. Ayes: O'Dwyer, Holmes, Wilkins. Nays: Soper. Absent: Reichert. Motion carried.

Reports:

County Commissioner – G. Sauer – Verbal Report. Benzie County Road Commission purchasing two new trucks, budgeting \$186,000 for roof, and looking into additional building repairs. Regarding school safety; they have conducted drills and are discussing results. The Maples was approved for occupancy permit. County Commissioners are considering a Headlee override vote in the future.

DPW – C. Pritchard - Written report provided.

Planning Commission - K. Holmes.

Parks & Recreation Commission - B. Soper. Latest meeting minutes provided.

BFA - J. Wilkins. Latest meeting minutes provided.

BLUA/Fire Board - K. Holmes & H. O'Dwyer.

Personnel Committee - J. Wilkins & K. Holmes. Written report provided.

Building Committee – B. Soper. No report.

Water/Sewer - J. Wilkins & K. Holmes. See Personnel Committee report.

Grants - J. Wilkins. & B. Soper. No Report.

ELSS - K. Mills. No Report.

Zoning Administrator - J. Mills. Written report provided.

Code Enforcement Officer – Vacant

Policy & Procedures - J. Wilkins. Will try for policy updates in January.

Announcements: President Wilkins thanked the Clerk for her service.

Public Comment: None received.

Adjournment: 7:46pm.

Appendix D: Approval Documentation

Document	Page
Parks and Recreation Commission Resolution of Recommendation of Adoption.....	D-2
Official Resolution of Adoption by the Village of Elberta Council.....	D-3
Letter Transmitting Adopted Plan to Benzie County Planning Commission.....	D-4
Letter Transmitting Adopted Plan to Regional Planning Agency, Networks Northwest...	D-5

VILLAGE OF ELBERTA PARKS AND RECREATION COMMISSION
2020-2024 Recreation Plan
Resolution of Recommendation of Adoption #12-2019

WHEREAS, the VILLAGE OF ELBERTA has undertaken a Five-Year Recreation Plan which describes the physical features, existing recreation facilities and the desired actions to be taken to improve and maintain recreation facilities during the period between 2020-2024, and

WHEREAS, a public comment session was held on October 7, 2019, and another is scheduled for December 19, 2019 at the Community Building to provide opportunities for citizens to express their opinions, ask questions, and discuss all aspects of the proposed 2020-2024 Recreation Plan, and

WHEREAS, the members of the Parks and Recreation Commission has reviewed and noted additions and edits to the plan that the Village of Elberta has developed for the benefit of the entire community,

NOW, THEREFORE BE IT RESOLVED that the members of the VILLAGE OF ELBERTA PARKS AND RECREATION COMMISSION hereby recommend to the COUNCIL TRUSTEES to adopt the VILLAGE OF ELBERTA 2020-2024 RECREATION PLAN with amendments noted as a guideline for improving recreation for the residents of the VILLAGE OF ELBERTA,

Yeas: B. Soper, S. Oseland, G. Williams, J. Wilkins

Nays: None

Absent: Michele Cannart

I, Jennifer Wilkins, Secretary of the Village of Elberta Parks and Recreation Commission, do hereby certify that the foregoing is a true and original copy of a resolution adopted by the VILLAGE PARKS AND RECREATION COMMISSION at a Regular Meeting held on the 12th day of December, 2019.

 12-12-19

Jennifer Wilkins, Secretary

Official Resolution of Adoption by the Village of Elberta Council

VILLAGE OF ELBERTA
Recreation Plan
Resolution of Adoption #2019-05
COUNCIL of the VILLAGE OF ELBERTA

WHEREAS, the VILLAGE OF ELBERTA has undertaken a Five Year Recreation Plan which describes the physical features, existing recreation facilities, and the desired actions to be taken to improve and maintain recreation facilities during the period between 2020-2024, and

WHEREAS, a public comment session was held October 7, 2019, and again December 19, 2019 at the Community Building to provide an opportunity for citizens to express their opinions, ask questions, and discuss all aspects of the Recreation Plan, and

WHEREAS, the Village of Elberta has developed the plan for the benefit of the entire community and to adopt the plan as a document to assist in meeting the recreation needs of the community, and

WHEREAS, after the public meeting, the VILLAGE COUNCIL voted to adopt said Recreation Plan,

NOW, THEREFORE BE IT RESOLVED that the TRUSTEES of the VILLAGE OF ELBERTA hereby adopts the VILLAGE OF ELBERTA 2020-2024 RECREATION PLAN as a guideline for improving recreation for the residents of the VILLAGE OF ELBERTA.

Yeas: *O'Dwyer, Soper, Holmes, Wilkins*

Nays: *None*

Absent: *Reichert*

I, Maryanne Goodman, VILLAGE Clerk, do hereby certify that the foregoing is a true and original copy of a resolution adopted by the VILLAGE COUNCIL at a Regular Meeting held on the 19th day of December, 2019.


Maryanne Goodman, Village Clerk



Village Office

151 Pearson Street · PO Box 8 · Elberta, Michigan 49628-0008
Phone: (231) 352-7201 · Fax: (231) 352-4033

January 7, 2020

Benzie County Planning Commission,

The Village of Elberta recently went through the process of updating and approving a new five-year Recreation Plan, titled "Village of Elberta 2020-2024 Recreation Plan."

The Recreation Plan describes the physical features, existing recreation facilities, and the desired actions to be taken to improve and maintain the Village's recreation facilities during the period between 2020-2024.

The Village developed the plan to be eligible for grant opportunities. These grants would aid in improving existing recreation facilities to benefit the entire community.

Please see the attached Village of Elberta 2020-2024 Recreation Plan for your review and archives.

Thank you,

A handwritten signature in black ink that reads "Jennifer S. Wilkins".

Jennifer S. Wilkins, Village President
jwilkins@villageofelberta.com

Village Office Contact:
Mary Kalbach, Grant Administrator/Village Treasurer
treasurer@villageofelberta.com



Village Office

151 Pearson Street · PO Box 8 · Elberta, Michigan 49628-0008
Phone: (231) 352-7201 · Fax: (231) 352-4033

January 7, 2020

Networks Northwest,

The Village of Elberta recently went through the process of updating and approving a new five-year Recreation Plan, titled "Village of Elberta 2020-2024 Recreation Plan."

The Recreation Plan describes the physical features, existing recreation facilities, and the desired actions to be taken to improve and maintain the Village's recreation facilities during the period between 2020-2024.

The Village developed the plan to be eligible for grant opportunities. These grants would aid in improving existing recreation facilities to benefit the entire community.

Please see the attached Village of Elberta 2020-2024 Recreation Plan for your review and archives.

Thank you,

A handwritten signature in black ink that reads "Jennifer S. Wilkins".

Jennifer S. Wilkins, Village President
jwilkins@villageofelberta.com

Village Office Contact:
Mary Kalbach, Grant Administrator/Village Treasurer
treasurer@villageofelberta.com