

**Village of Elberta
Recreation Plan
2014–2019**

Village of Elberta
Benzie County
Michigan

Prepared for:

Village Council

Reggie Manville, President

Diane Jenks, President Pro Tempore

Joyce Gatrell

Ken Holmes

Linda Manville

Matt Stapleton

Jennifer Wilkins

Sharyn Bower, Clerk

Laura Manville, Treasurer

Prepared by:

Village of Elberta Parks and Recreation Commission
Jennifer Wilkins (Secretary) and Emily Votruba (Member)
PO Box 8 • 151 Pearson Street
Elberta, MI 49628-0008
(231) 352-7201

Table of Contents

Introduction	1
Community Description	2
Figure 2 Base Map	3
Figures 3 & 4 Topography	4
Figures 5 & 6 Population Density	5
Figure 7 Future Land Use Map	6
Figure 8 Zoning Map	7
Administrative Structure	8
Recreation Inventory	9
Public	
Private	
County Recreation	
Figure 10 County Recreation Map	
Description of the Planning and Public Input Process	17
Goals, Objectives, and Action Plans	18
Appendix A: Detail Maps of Village Parks	21
Appendix B: Proposed Beach Road Project	27
Appendix C: Possible Future Work on Life Saving Station	28
Appendix D: Public Input Documentation	29
Appendix E: Approval Documentation	39

Introduction

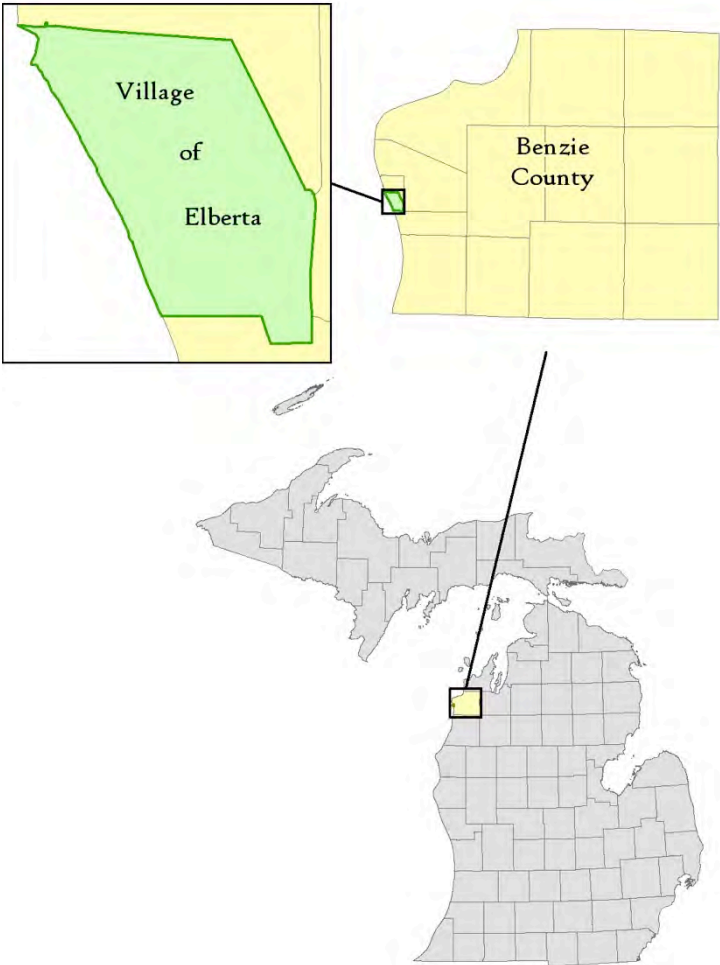
The following Recreation Plan provides a framework for utilizing the Village's resources for recreational purposes in order to effectively meet identified and anticipated needs. This plan identifies present and anticipated recreational needs and program projects to meet the future demands of residents and visitors alike. As a result, this plan will provide a comprehensive strategy for meeting those community recreation needs. The plan is intended to complement the Village's overall planning and development efforts.

The planning process undertaken for this plan incorporated the use of Village residents, trustees, and staff. The input helped in generating a future development plan for the Village's recreational facilities. Another element of this process is an assessment of the Village's local and area wide recreational resources. This includes an inventory of public and private recreational facilities. From this inventory, overall recreation goals and objectives for the Village are established.

The Village of Elberta's Recreation Plan concludes with an action program that suggests the direction and the activities that can be adopted for future recreational development and programming. This action program establishes program priorities, identifies financial requirements, and discusses the general administration of the overall program. This plan has been prepared to identify and propose a strategy for eliminating those deficiencies in the Village's recreation opportunities that can be accomplished within a five-year time frame. The plan has also been prepared to satisfy recreation planning requirements established under Michigan Department of Natural Resources (MDNR) guidelines.

Community Description

Figure 1



The Village of Elberta is a small village located at the western shore of Benzie County (Figure 1). The Village was first inhabited by settlers in the 1850s and soon became a center for the commercial shipping industry, specifically lumber. In 1866, the federal government constructed the first navigational channel in the area. This channel acted as the catalyst for future economic growth of the Village and the region. The channel served as the means for the development of saw mills, an iron foundry, a Lake Michigan car ferry, and other port-based businesses until the early 1980s when the Ann Arbor Railroad ceased its operation.

Recreation and associated leisure activities have become a significant part of the economic activity in the area. The type of activities preferred by a community's residents often

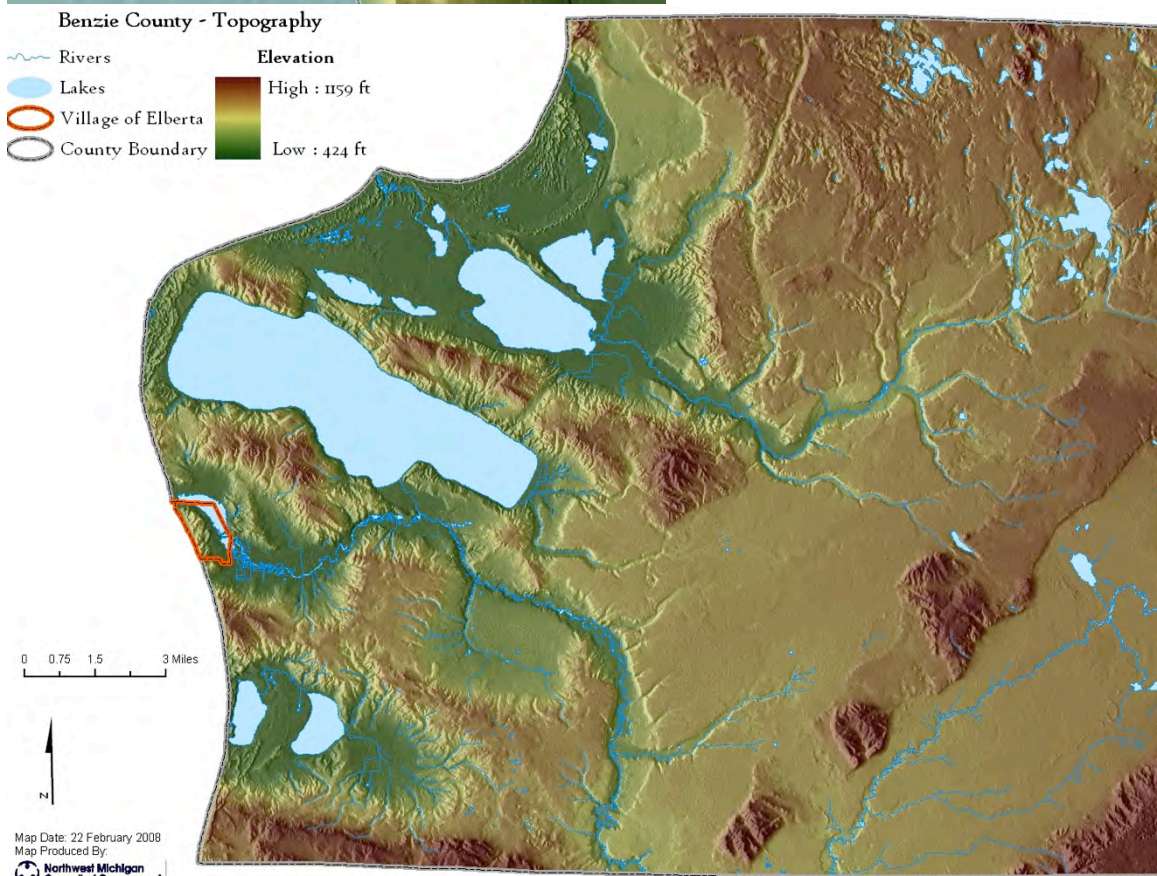
reflects the specific characteristics of the community. Such characteristics include a community's population growth rate, the age structure of the population, the social-economic composition of the population, land development patterns, available natural resources, climate, and geographical location. All these characteristics can be correlated to a community's recreational preferences in one manner or another, describing the particular quality of existing recreational opportunities as well as identifying some of the factors that will influence recreational needs in the future. Figures 2 through 8 on the following pages show different characteristics of the Village and the surrounding community.

Figure 2: Base Map



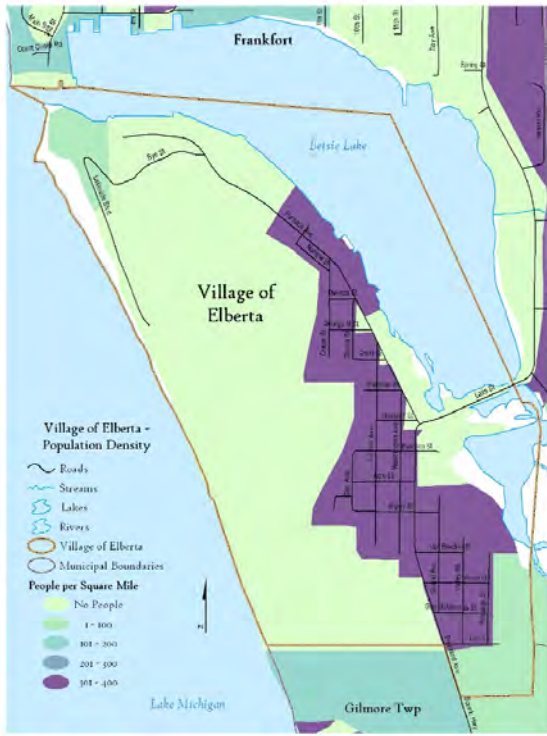


Figures 3 & 4: Topography
 The maps on this page show the topography of the Village and the surrounding county. Within the Village boundaries the Elevation of the area ranges from about 580 feet to approximately 865 feet. Elevation in the surrounding county ranges from 424 feet to 1,159 feet. Elevation data was acquired from the Michigan Center for Geographic Information's Data Library.



Map Date: 22 February 2008
 Map Produced By:
 Northwest Michigan Council of Governments
 Data Source: Michigan Center for Geographic Information, Michigan Geographic Framework Version 4b

Figures 5 & 6: Population Density



The maps on this page show the population density (number of people per square mile) of the Village and the surrounding county. The data source for this information is the 2010 Census. It is shown to a block level. The Village's population is 372 as of 2010. The Village Master Plan states that within the 0.7 square miles of land area available in the Village, 78.1% is vacant, 12.1% is residential, and 9.8% commercial or industrial.

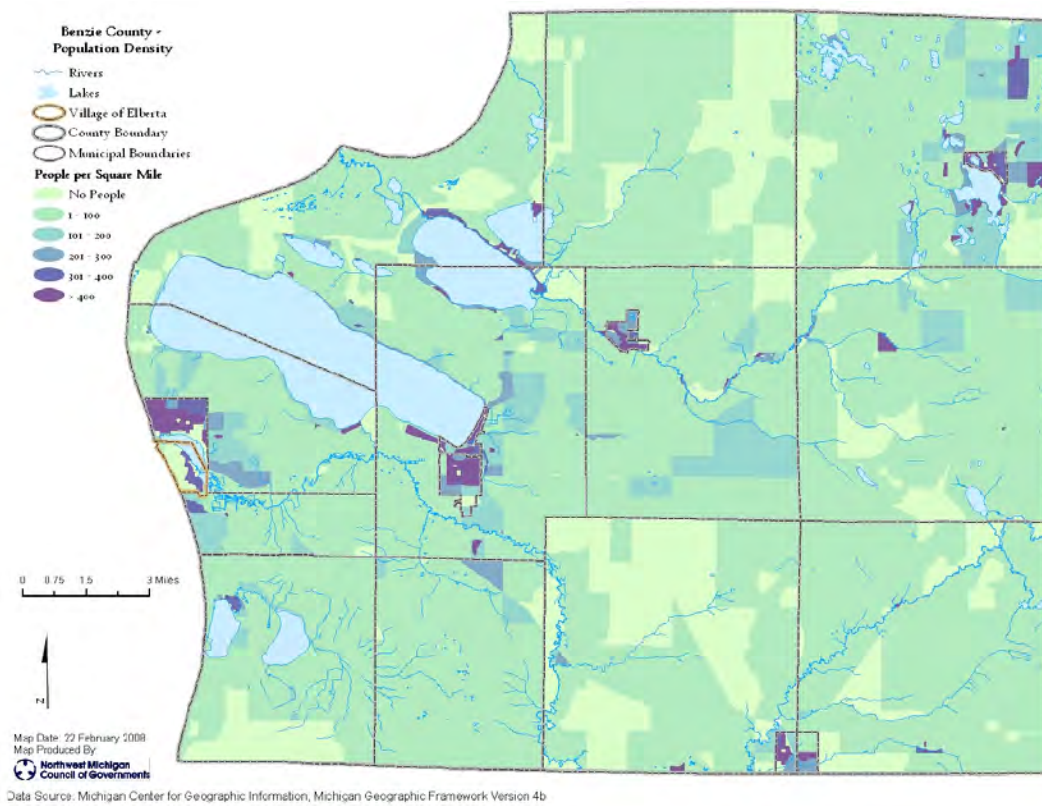
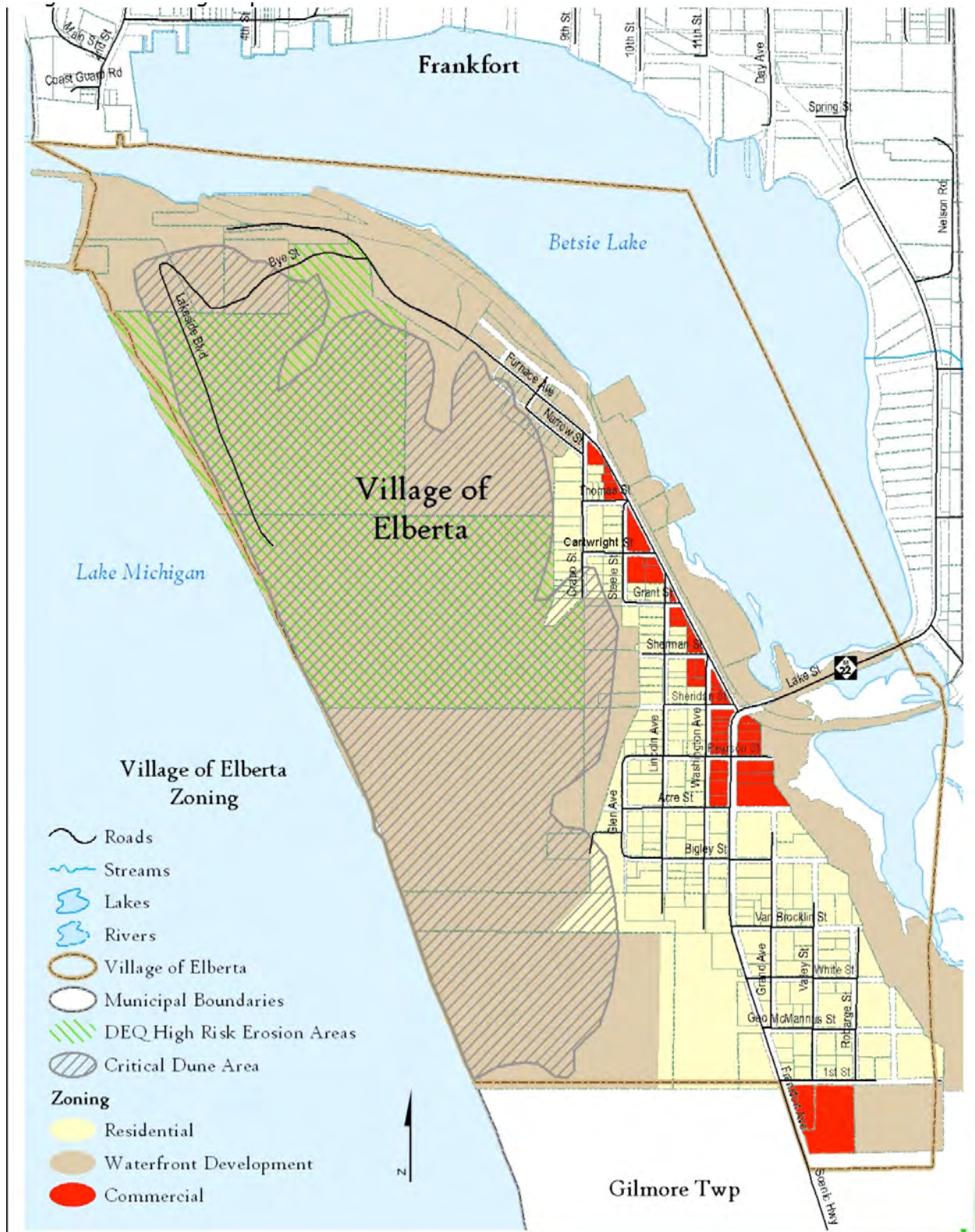


Figure 7: Future Land Use Map



Figure 8: Zoning Map

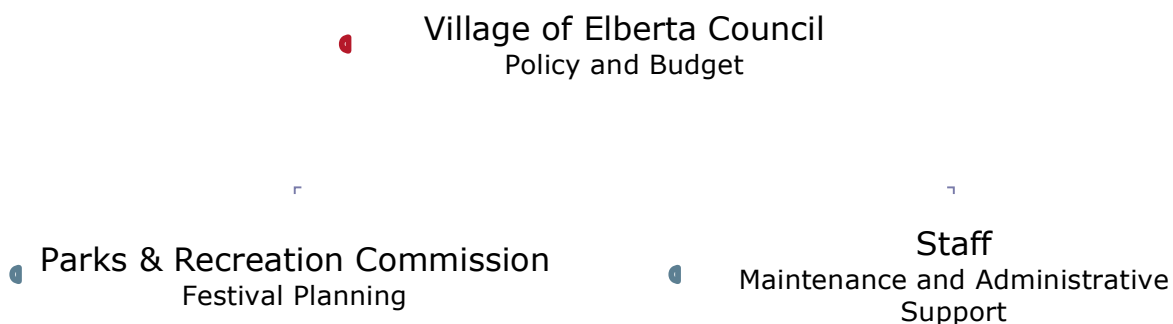


In Figures 7 and 8 the Critical Dune Area and High Risk Erosion Areas within the Village are shown. According to the Michigan Department of Environmental Quality (DEQ), Critical Dune areas protected by Part 353 represent the highest and most spectacular dunes extending along much of Lake Michigan's shoreline and the shores of Lake Superior, totaling about 80,000 acres in size. The legislature has found that Critical Dune areas of the state are a unique, irreplaceable, and fragile resource that provide significant recreational, economic, scientific, geological, scenic, botanical, educational, agricultural, and ecological benefits to the people of Michigan. Local units of government should have the opportunity to exercise the primary role in protecting and managing critical dune areas in accordance with this part. The benefits derived from alteration, industrial, residential, commercial, agricultural, silvicultural, and the recreational use of critical dune areas shall occur only when the protection of the environment and the ecology of the critical dune areas for the benefit of the present and future generations is assured.

Also according to the DEQ, high risk erosion areas are those shorelands of the Great Lakes and connecting waters where recession of the zone of active erosion has been occurring at a long-term average rate of one foot or more per year. The erosion can be caused from one or several factors. High water levels, storms, wind, ground water seepage, surface water runoff, and frost are important factors causing erosion. The high risk erosion area regulations establish required setback distances to protect new structures from erosion for a period of 30 to 60 years, depending on the size, number of living units and type of construction. Other setback requirements are applicable for home restorations and additions to existing structures. Any person or local government agency proposing to erect, install, move, or enlarge a permanent structure on a parcel must obtain a permit prior to the commencement of construction.

Administrative Structure

Chart 1: Organizational Chart



The park and recreation functions in the Village of Elberta are overseen by the Village Council. The Village also has a Parks and Recreation Commission whose role has been to orchestrate fundraising events to maintain and upgrade parks and to sponsor events such as the annual Farmers Market and Solstice Festival. The

Village employs one staff person under their Major and Local Streets Fund who spends a portion of his time maintaining the parks within the Village limits. While there is no specific designated funding for parks and recreation within the Village budget some funding to maintain the parks comes out of the Village's General Fund and revenue received for renting out park facilities. Monies raised through the various fundraisers put on by the Parks and Recreation Commission are put toward upgrading playground equipment, park maintenance, and other projects to enhance community life. The projected annual revenue for 2014 is approximately \$45,000. The Parks and Recreation Commission currently has three Committees that run on volunteer effort. The Elberta Historical Preservation Committee, The Solstice Festival Committee, and the Beach Committee. The Village currently collaborates with the North West Michigan Council of Governments, The Lakes to Land Initiative, The Betsie Valley Rails to Trails, the Frankfort Chamber of Commerce, and the local MSU Extension office.

Recreation Inventory: Special Concerns for this Recreation Plan Period

Elberta maintains a huge amount of parkland for a village of its size. In recent years, as the Village has struggled financially, the Village council and other citizens have been puzzled by the challenge of providing adequate maintenance to its existing park facilities. It has become clear that Parks and Recreation Commission volunteer fundraising and what little park maintenance is covered by the Village budget is inadequate to maintain our parks at a satisfactory level, let alone improve or develop new amenities. Therefore, it is imperative that the Parks and Recreation Commission, council, and residents consider additional internal and outside funding sources. Village president Reggie Manville has suggested that one or more of our underused park properties be sold, in an effort to both raise revenue and reduce maintenance costs. In combination with concerted fundraising and grant-seeking efforts, this asset-sale course should be considered and brought before residents for their approval in a democratic, open manner. The resultant cost-cutting and revenue influx should be directed toward highlighting and improving parklands and facilities that are of great ecological and recreational value and are used frequently by our residents and visitors alike.

The area known as Elberta Beach, a long stretch of open, undeveloped natural beach and dunelands free for the public to enjoy, is arguably the Village's greatest and most beloved asset. Much of this property is privately owned, but a platted Village road called Lakeside Boulevard runs through it. The Village also owns and maintains two small parking lots for those wishing to visit the beach: an upper lot, which is valued for its view of the lake and sunset, and a lower lot with two boardwalk trails through the sand, one leading to the long Elberta pier and the other to the beach. The property known as Elberta Beach is the real estate immediately west of the lower parking lot. There is a refuse can, sometimes a Porta-John, and a Mutt Mitt stand at the parking lot. The parcel to the north of that property, currently behind a chain-link fence, is privately owned, formerly by Koch Fuel and now by Elberta Land Holding Company. To the south of the lower parking lot there are a few lots of developed private property on either side of Lakeside

Boulevard. Platted, undeveloped private property continues for several hundred yards south. The beach frontage west of this platted property up to the shoreline is known as Thelma's Cradle and has been deeded for public access since 1907. The remaining property from Elberta Beach/Thelma's Cradle and Lakeside Boulevard up until Grace Road is privately owned, except for 1,440 feet (about 60 acres) owned by the Village of Elberta, now known as Elberta Dunes South park.

For many years, offroad driving on the dunes and beach has posed a safety hazard for people, plants, and animals. Drivers attempting to scale the bluff with their vehicles cause erosion that can undermine the stability of the dune in addition to destroying plant life there. The lack of a designated, graded roadway means that the farther ends of the Elberta beach are effectively accessible only to those with four-wheel-drive vehicles, and even those vehicles sometimes get stuck in the sand drifts and must be towed out at the owners' expense. In the fall of 2012, after several unsuccessful attempts to control off-road vehicle traffic, the Village Council along with the Sheriff Department and the DNR determined that improving Lakeside Boulevard would be a means of protecting this designated critical dune area while also improving access to the beach for residents and visitors.

In October 2012 the Village Council passed a motion to raise \$32,000 via PayPal on the Village website to develop the road. The Village called this "Phase 1" of development. As of this writing, no donations have been received via PayPal for this project. In May 2013, the Council directed Village DPW Superintendent Ken Bonney to apply for a DNR/DEQ permit to excavate and gravel a section of Lakeside Boulevard to allow for angled parking on the west side of the road for approximately 75 vehicles. Also in May of 2013, a group called the Dunes Neighbors formed to assist in fundraising for the road. As of this plan's formalization, the Dunes Neighbors had secured a fiduciary, Grand Traverse Regional Community Foundation, to handle donations for the road development, and fundraising had begun. As of June 28, Ken Bonney had installed signage at the end of the road and along the west side to discourage motorized vehicle traffic off the road. See item B under Goals, Objectives, and Action Plan for details.

Village Recreation Inventory: Details

The inventory of recreation within the Village was conducted via aerial photo interpretation and on-site visits. Figure 9 shows the location of recreation within the Village boundaries. Below is a list of every park, including a description and the amenities available at each. The Accessibility Assessments were based on criteria provided in the Michigan Department of Natural Resources' Guidelines for the Development of Community Park, Recreation, Open Space, and Greenways Plans. All playground equipment in Village parks is funded and maintained by Elberta Parks and Recreation and by DPW staff (currently Ken Bonney and Corey Toms; until recently also Charlie Hendershott, who retired in October).

Public:

1. *Elberta Historic Waterfront Park* – This Neighborhood Park is located on 5.6 acres on the shores of Betsie Bay and includes over 1,200 feet of scenic water frontage over 10 acres of land. This park’s amenities provide for activities such as fishing, picnicking, and group gatherings that include: weddings, reunions, outdoor theater, and other gatherings. Development of this park was made possible through 4 grants awarded in 1998 and 1999: Elberta Economic Development Corporation with the leadership of the consultant Charles Eckenstahler, PCT, was instrumental in procuring these grants. The first grant (TF98-033) titled Ann Arbor Railroad Park/Betsie Valley Trail Head Dev. provided funding that allowed for the development of elements such as: restroom/concession building, utilities (water & sewer), concrete amphitheater stairway, site lighting, park furnishings, and landscaping/plantings. The second award (TF99-014) titled Elberta Historic Waterfront Trailhead Park-Phase II provided funding for the development of elements such as: a picnic pavilion, performance pavilion, Betsie Valley Trail Paving, parking lot (54 spaces)/entry road, site lighting, viewing event deck, landscaping, and drinking fountain. The fishing deck was procured through the Great Lakes Fisheries Trust. The GLFT allowed the village to use the \$104,000 awarded for the fishing deck to be utilized up front for the match for the MDNR Trust Fund Grant. The Traverse City Rotaries Charity provided the grant for the handicapped-accessible children's playground. The match was in-kind, with the community getting together for three days to construct the playscape with guidance by a consultant. The swingset was part of the original playground grant, however a handicapped-accessible swing has since been added and paid for by the efforts of Elberta Parks and Recreation. Twelve of the wooden picnic tables in the park were built through a fundraiser from Elberta EDC and volunteers working together to construct the tables. The largest donation came from the Frankfort and Honor Building Supply. No tax dollars were used to build this park. The park is maintained with fundraising efforts by Parks and Rec, with labor and general fund assistance through the Village DPW and funds from the rental of the Lifesaving Station. All the elements from both grants were built and are still in good condition except for the public restrooms and concession facility.

Accessibility Assessment = 5. Facilities include:

- a. Covered Picnic Pavilion housing 12 or more picnic tables
- b. Two parking lots including handicapped parking
- c. Children’s playground with bark bedding
- d. Swing set with 6 swings and 1 handicap swing provided by Park & Rec
- e. 1 donated bicycle rack
- f. Lighted paved paths/trails accessible to the handicapped
- g. 10 park benches
- h. Outdoor amphitheater
- i. Covered fishing pavilion
- j. Life Saving Station which is available for rent to group gatherings
- k. Restrooms (inside Life Saving Station building; not accessible to general public)
- l. Drinking fountain
- m. Sundial

- n. Informative historical markers
- o. Future: Public restrooms
- p. Future: Historical display of remnants of car ferry aprons
- q. Future: Historical display of remnants of iron foundry

For a detailed map of this park please see Appendix A.

2. *Elberta Lake Michigan Beach* – This community park is located on beautiful Lake Michigan and includes just over one mile of public beach access. Along with beach access this park is often used for fishing, from the beach and from the pier. Accessibility Assessment = 1. Facilities include:
- a. Nonfunctioning primitive restrooms
 - b. Handicapped accessible pier
 - c. Scenic Overlook parking
 - d. Handicapped parking at beach access
 - e. Boardwalk
 - f. Future: Concessions
 - g. Future: Restrooms
 - h. Future: Road extension with more parking
 - i. Future: Signage prohibiting motorized vehicles in critical dune areas

For a detailed map of this park please see Appendix A.

3. *Dudley Penfold/Lucy Keillor Memorial Park (aliases: Mini-pond/Pavilion Park/Elberta Marina)* – This 4 acre Neighborhood Park is located in the heart of Elberta on Betsie Bay and is directly accessible from M-22. Accessibility Assessment = 1. Amenities include:
- a. Covered picnic pavilion
 - b. 12 picnic tables including one handicap accessible picnic table
 - c. 3 grills
 - d. Wooden playground train surrounded by bark bedding
 - e. Boat launch suitable for shallow boats such as kayaks and canoes
 - f. Pedestrian bridge
 - g. Access to the Betsie Valley Trail
 - h. Trailhead parking
 - i. Public restroom
 - j. Wetland area that hosts frogs and other wildlife

The wooden footbridge was designed and built by Bill Soper and a team of volunteers, funded by the Elberta Parks and Recreation Commission. The Pavilion and wooden playground train were funded by Parks and Rec along with the Grand Traverse Band of Ottawa and Chippewa. The Elberta Farmers Market, begun in 2002, continues to grow and prosper due to the efforts of Elberta Parks and Rec, which oversees its operations along with a market master (currently Sue Oseland). In 2012, Jennifer Wilkins stained the train, formerly brown, in bright colors, with paint paid for by Parks and Rec and her labor expenses donated by Sand Products Corporation. Jennifer also repainted the white propellers and anchor memorial on a volunteer basis.

For a detailed map of this park please see Appendix A.

4. *The Community Building* – This Neighborhood Park sits at the south end of the Village on 7 acres of land that was originally part of the local school property. The property was split and the side with the school was sold. The remaining portion is used for sports and a public meeting room and classes/party rental. Accessibility Assessment = 2. Facilities include:
 - a. The Community Building
 - b. Restrooms
 - c. Baseball field
 - d. Bleachers
 - e. Available to rent for classes, parties or meetings

The Community Building was funded through a grant and fundraising efforts of the Elberta EDC. The building can be rented for parties, meetings, classes, or any small gathering. The ball diamond, bleachers, and dugout are funded and maintained by the Frankfort–Elberta Athletic Association. The swing set, teeter totter, monkey bars, tetherball pole, and mini basketball court that used to straddle the Village property and the Bay Valley Inn property are to be pulled up and/or otherwise transferred to Bay Valley Inn ownership per agreement with Bay Valley Inn property owner Loy Putney.

5. *Tot Park* – This ¼ acre mini-park is located within the residential area of the Village. It serves as a local playground for Village residents. Accessibility Assessment = 1. Facilities include:
 - a. Sandbox
 - b. Swing set
 - c. Slide
 - d. Teeter-totter
 - e. 2 Spring horses (to be removed)
 - f. Merry-go-round
 - g. 1 Picnic table
 - h. Park bench
 - i. Fencing on three sides

6. *Veterans Park* – This ½ acre mini-park is maintained as open space within the residential area of the Village. There are no amenities or facilities to speak of in relation to recreation. Accessibility Assessment = 1.

7. *Anderson Park* – This ½ acre mini-park located within the residential area of the Village and is used as a playground. Accessibility Assessment = 1. Facilities include:
 - a. Sit-up bench
 - b. Pull-up bars
 - c. Exercise glider
 - d. Basketball court with two hoops
 - e. 1 Park bench
 - f. 2 Picnic tables
 - g. Fencing on all sides

8. *Betsie Valley Trail* – This Trail Park extends approximately 23.5 miles throughout Benzie County. It briefly extends into the Village of Elberta for a ½ mile. This trail is widely used for both hiking and biking. It serves as a connection between different communities and parks within Benzie County. It is hoped that this trail will be extended along the south shore of Betsie Bay and on to the beach, if funding is obtained. Betsie Valley Trail is a designated trail that was the old Ann Arbor Railroad Corridor. Although section D was not in the original funding, the trail is designated and will be finished when funding becomes available.

9. *Elberta Dunes South Natural Area* – The former site of the Allmendinger farm and later Thorpe residence. The Thorpe family gave this 58-acre parcel to the Grand Traverse Regional Land Conservancy to hold in trust with the intention that it eventually be acquired by the Village of Elberta. From the GTRLC website: " Protected in 2010, Elberta Dunes South features majestic glacial moraines, towering dunes, untouched forests and a 1/4 mile of sandy Lake Michigan beach. A hiking trail leads to sweeping views of Lake Michigan and the surrounding Betsie Valley. This property hosts the Pitcher’s Thistle- listed federally and by the state as a threatened species, the Lake Huron Locust- a state threatened insect, and Piping Plovers- a federally listed endangered species, have used this part of Lake Michigan’s shore for nesting." With the help of Natural Resources Trust Grant TF08-034, the Village took possession of the property in early 2011

Facilities include:

- a. Nature trails
- b. Welcome signage
- c. Future: Snowmobile run along designated area
- d. Future: Parking
- e. Future: Natural history signage
- f. Future: Bench(es) at top of trail
- g. Future: Restroom
- h. Future: Viewing platform

Private:

(For a detailed map of the marinas please see Appendix A)

2. *Betsie Bay Marina* – This privately owned marina is located on Betsie Bay and includes 56 slips; a boat launch; refueling station; and a storage/maintenance shed.
3. *Betsie Shores Dockminiums* – This privately owned marina is located on Betsie Bay. 42 slips available.
4. *North Star Marina* – This privately owned marina is also located on Betsie Bay and includes 24 boat slips.

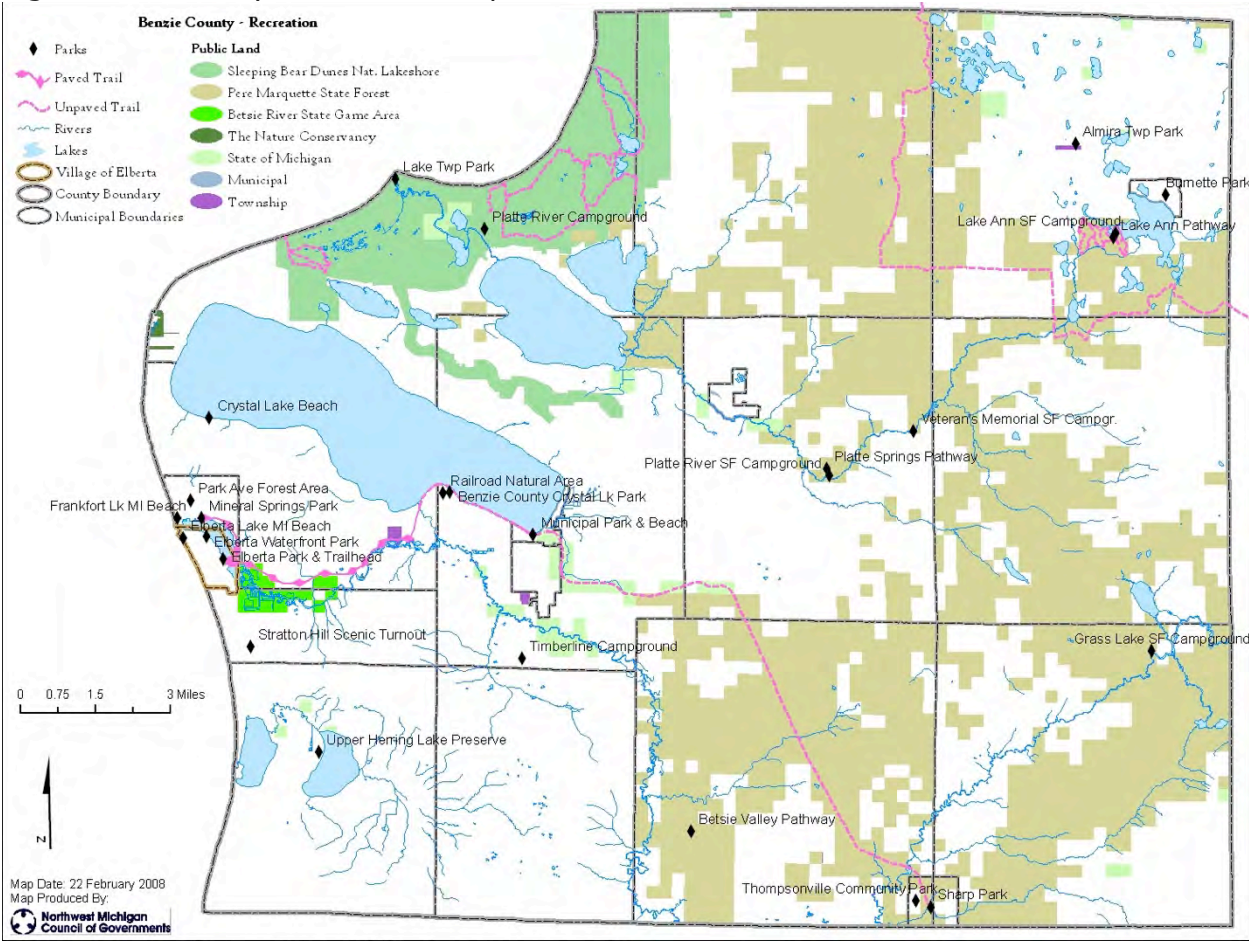
County Recreation:

Recreation outside the Village Boundaries is abundant in Benzie County. Figure 10 shows the Village's proximity to many state and federal lands including: Sleeping Bear Dunes National Lakeshore; Pere Marquette State Forest; Betsie River State Game Area; The Nature Conservancy lands; and other State of Michigan Lands. Proposed recreation throughout Benzie County was identified through public input sessions for the Northwest Michigan Regional Non-Motorized Strategy. The resulting maps can be viewed online at: <http://www.nwm.org/nonmotorizedstra.asp>. Though completing the Beach-to-Beach Trail in the Village of Elberta was identified as a proposed route it was not selected as a priority.

Figure 9: Village Recreation Map



Figure 10: County Recreation Map



Description of the Planning and Public Input Process

One public input meeting was held February 14, 2013 in the Village of Elberta at the local former Library. A second session was held before the regular council meeting on April 18, 2013. The draft plan became available to the public for viewing on April 2, 2013, both on the Village website (www.villageofelberta.com) and in hard copy at the Village office. A notice regarding when and where the draft plan would be available for viewing was put in the *Benzie County Record-Patriot* (see page TK). The public input workshop on April 18 offered residents and other members of the public a chance to share their interests about recreation within the Village. Notification of the workshop meeting was posted in local businesses and notices were put up in the Village office, the post office, and the library a couple of weeks prior to the meeting date. At the workshop maps showing current recreation were available for viewing along with the draft plan. Questionnaires were given to the workshop attendees asking for their views on recreation in the Village. TTKK people attended the workshop on the 18th and offered their input. The results of the public input workshop and official minutes can be seen summarized in Figure 11.

The results of the workshop were incorporated into the draft, and a final draft was made available for viewing September 3, 2013. A public hearing on the second draft was noticed for the October 17 Council Meeting [I will tell Sharyn to put a notice in the September 11 paper; that would be six weeks' notice]. Notice of this meeting was placed in the local paper and posted at the village office and post office five weeks prior to the meeting date. Comments and questions were received by Jennifer Wilkins and the Village Office prior to the end of the day on October 17. All comments received were considered in finalizing the plan. The plan was presented for adoption to the Village Council during its October 17, 2013 meeting. The Elberta Village Council voted to adopt the recreation plan on TKTKTK [expected date October 17].

Goals, Objectives, and Action Program

Goal: The Village of Elberta seeks to provide its residents and visitors access to recreational opportunities that enhance the character and setting of the village.

Objectives:

- A. PROMOTE CONNECTIONS BETWEEN RECREATION AREAS Connect Elberta Lake Michigan Beach and the City of Frankfort's Lake Michigan Beach with a trail extension from the Betsie Valley Trail (Segment D). This includes improving the parking area on M-22 for the trailhead to provide better accessibility for the disabled and access to the Village downtown area. Provide better designation for crosswalk. Research creating a new crosswalk across beginning of Old M-168 to connect Duck's Head to Penfold/Farmers' Market park. Promote the connection between the State Game Area and Elberta Beach/parks via the Betsie Valley Trail. Promote the economic benefits of linking communities by water and land trails. Install bike racks at Penfold, Dunes South, and Elberta Beach. Consider promoting an intra-village safe route for bikes and pedestrians from Penfold to Dunes South via Lincoln Ave.

Action Strategy: (2014–2019) Seek funding from grants and trail organizations that can match money. Work with the City of Frankfort and Betsie Valley Trail Committee. Consult with Lakes to Land Initiative and Grand Vision on potential partnerships and funding sources.

- B. IMPROVE BEACH ACCESS AND SAFETY Gravel, grade, and clearly define a section of Lakeside Blvd 2,800 feet long and 50 feet wide at its widest point to create parking for approximately 75 vehicles and thereby improve access for auto, pedestrian, handicapped, and bike traffic. Limit parking at the entrance to the road and make this opening stretch narrow to preserve as many trees as reasonable and to calm traffic for the safety of families and children. Install signage designating where motorized vehicles are prohibited.

Demarcate edge of roadway on all sides to discourage offroad vehicular traffic. Add picnic facilities, Mutt Mitts, more trash receptacles, and composting toilet restrooms at the entrance to the Elberta Lake Michigan Beach (Future: picnic tables, trash receptacles, and restrooms at the end of Lakeside Blvd). A long term objective would be to provide year-round access to the beach by either creating a new entrance drive and/or extending the Beach-to-Beach Trail from the Historic Waterfront Park with the cooperation of property owners.

Action Strategy: (2014–2019) Reapply for Great Lakes Fisheries funding, Great Lakes Coastal Management grants, and seek other funding sources. Seek donations from members of the public. Raise funds during annual Solstice Festival. Work with the Dunes Neighbors fundraising group and the Grand Traverse Regional Land Conservancy.

- C. IMPROVE ACCESS TO EXISTING FACILITIES Provide continued maintenance for existing parks in the Village Recreation System. Weatherize, update and repair the Life Saving Station and the Community buildings for year round use and rentals. Build a public restroom at the Dudley Penfold Marina Park to serve trailhead users, Farmer’s Market attendees and the general public. Remove existing dock platforms and develop a J-shaped raised boardwalk fishing platform. Improve the boat launch with an eye to canoes and kayaks.

Action Strategy: (2014-2019) Have the Parks & Recreation Commission develop a volunteer program to provide park maintenance and/or seek ways to contribute funding for maintenance. Seek funding from grants where available. Find an architect/landscape architect to create a site plan and an estimated budget. Consult with Bill Olson of the Betsie Valley Trail Committee and other potential advisers/allies. Fisheries Trust grant (matching funds from work Ken Bonney has already done on dock removal)

UPGRADE ELBERTA DUNES SOUTH Upgrade Elberta Dunes South trail by adding a parking lot, trail signs, benches, lookout platforms, natural-history signage, and recreational activities. Funding already secured for parking area; work was completed in June of 2013.

Action Strategy: (2014-2019) Apply for the Recreation Passport Grant or any other funding that is appropriate. Work with the Grand Traverse Regional Community Foundation, which is acting as fiduciary for Dunes South, and ensure the \$900/yr generated by the endowment for maintenance is maximized by securing volunteer effort and donated materials for benches and signs, possibly a viewing platform.

- D. PROVIDE PERMANENT RESTROOM FACILITIES Build self-composting style permanent restrooms, as in State Parks, in the following Parks:
Elberta Beach 4 single stalls
Waterfront Park 4 single stalls
Farmers Market 2 single stalls

Elberta Dunes South 4 single stalls

Action Strategy: Fundraising campaign during 2013 Solstice Festival; seek other funding from donations and grants

- E. ENHANCE PLACEMAKING THROUGH SIGNAGE/WAY MARKING/HISTORICAL PROJECTS Install signage regarding the Penfold Park's history including the sawmill and early marina days. Protect the remains of the Foundry Building in advance of repurposing for community events, theater, historic site, etc. Maintain and continue restoration/preservation projects in the Elberta Life Saving Station interior and exterior. Continue collecting items for historical display in LSS.

Action Strategy: Seek other funding from donations and grants such as the Michigan Economic Development Corporation Farmers Market Grant. Partner with an organization such as the nascent Friends of the Elberta Life Saving Station.

- F. DEVELOP SUSTAINABLE REVENUE SOURCES FOR PARK PROJECTS AND MAINTENANCE Build endowments into fundraising campaigns for various projects. For example, \$900 a year comes from the Dunes South endowment fund and is meant to be spent on EDS maintenance. Develop other revenue streams through PayPal, memberships, civic organizations, and regular annual fundraising drives, such as the boardwalk plank and picnic table name fundraisers.

Action Strategy: Consult with Grand Traverse Regional Community Foundation. Work with Village Treasurer to improve PayPal donation page on Village website. Seek grant writers in the community.

Appendix A: Detail Maps of Village Parks

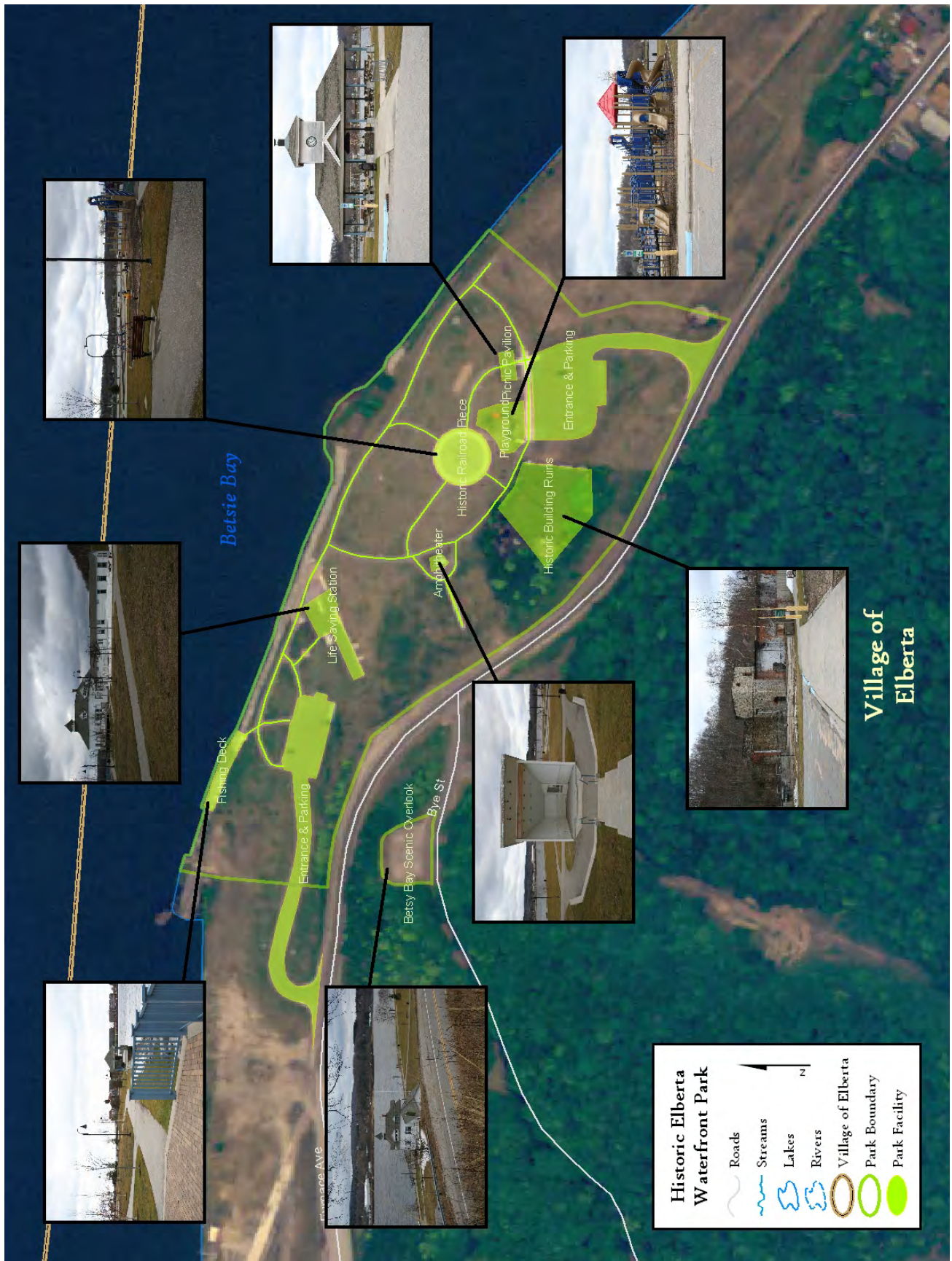
Elberta Historic Waterfront Park

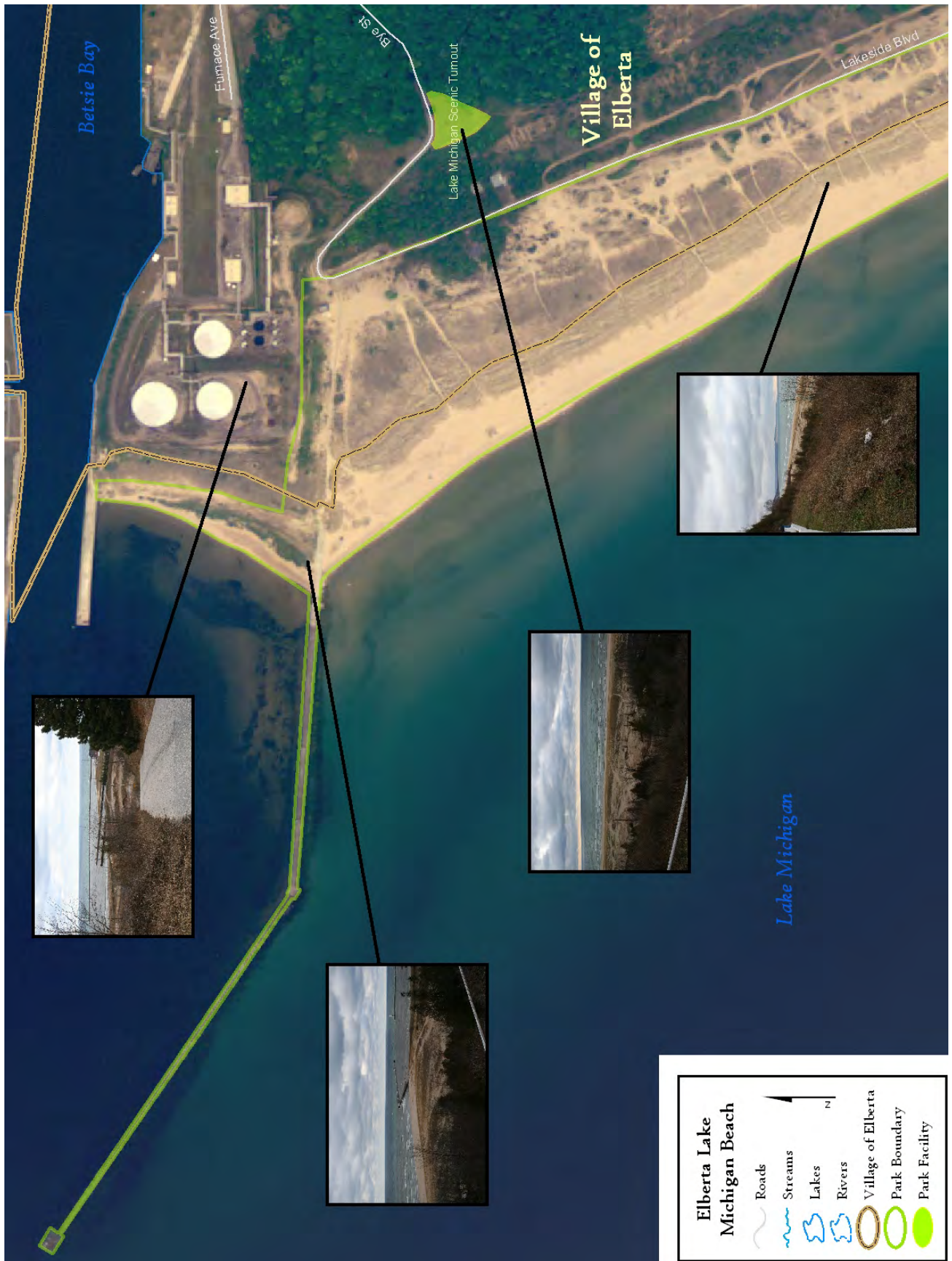
Elberta Lake Michigan Beach

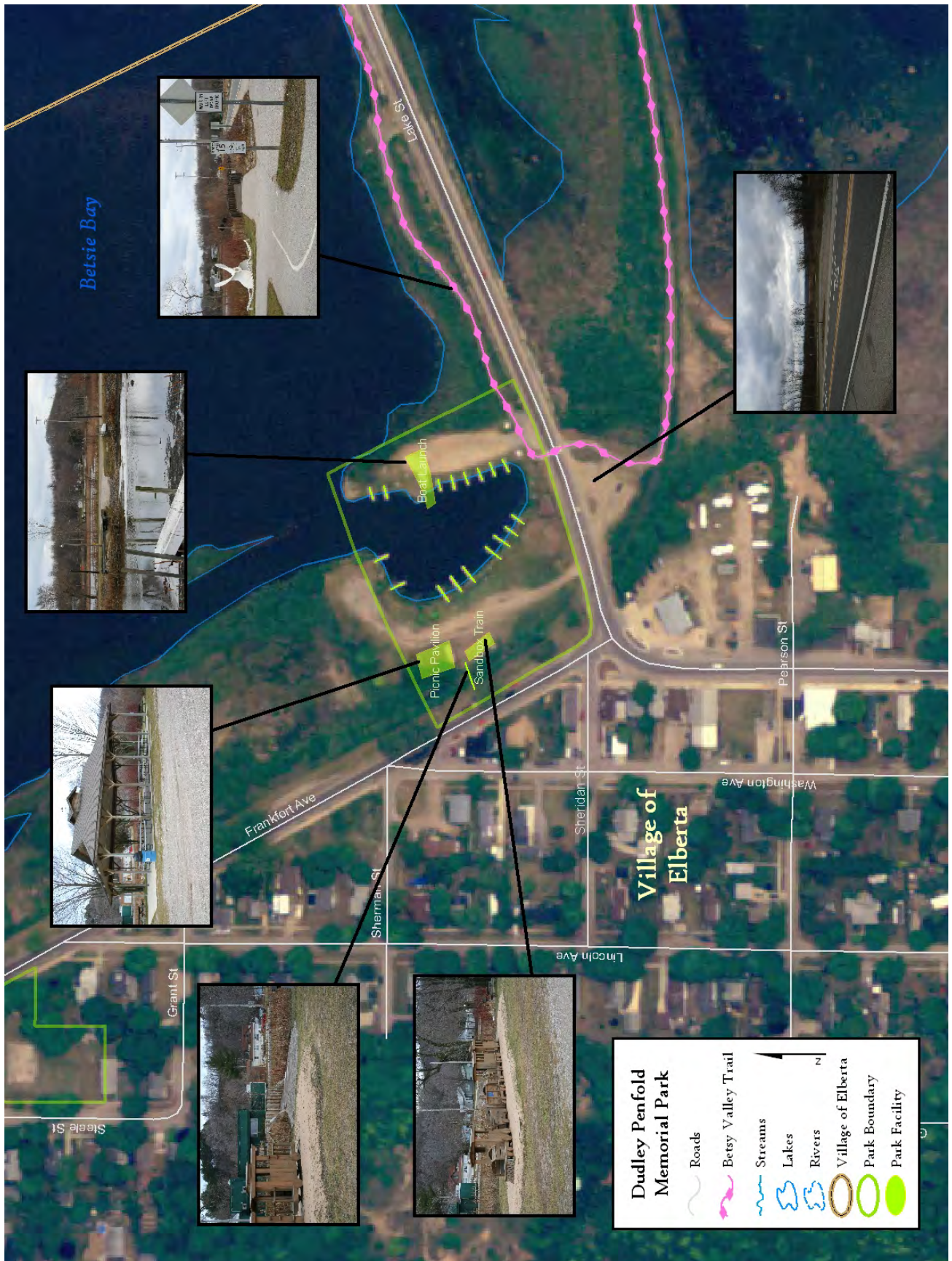
Dudley Penfold Memorial Park

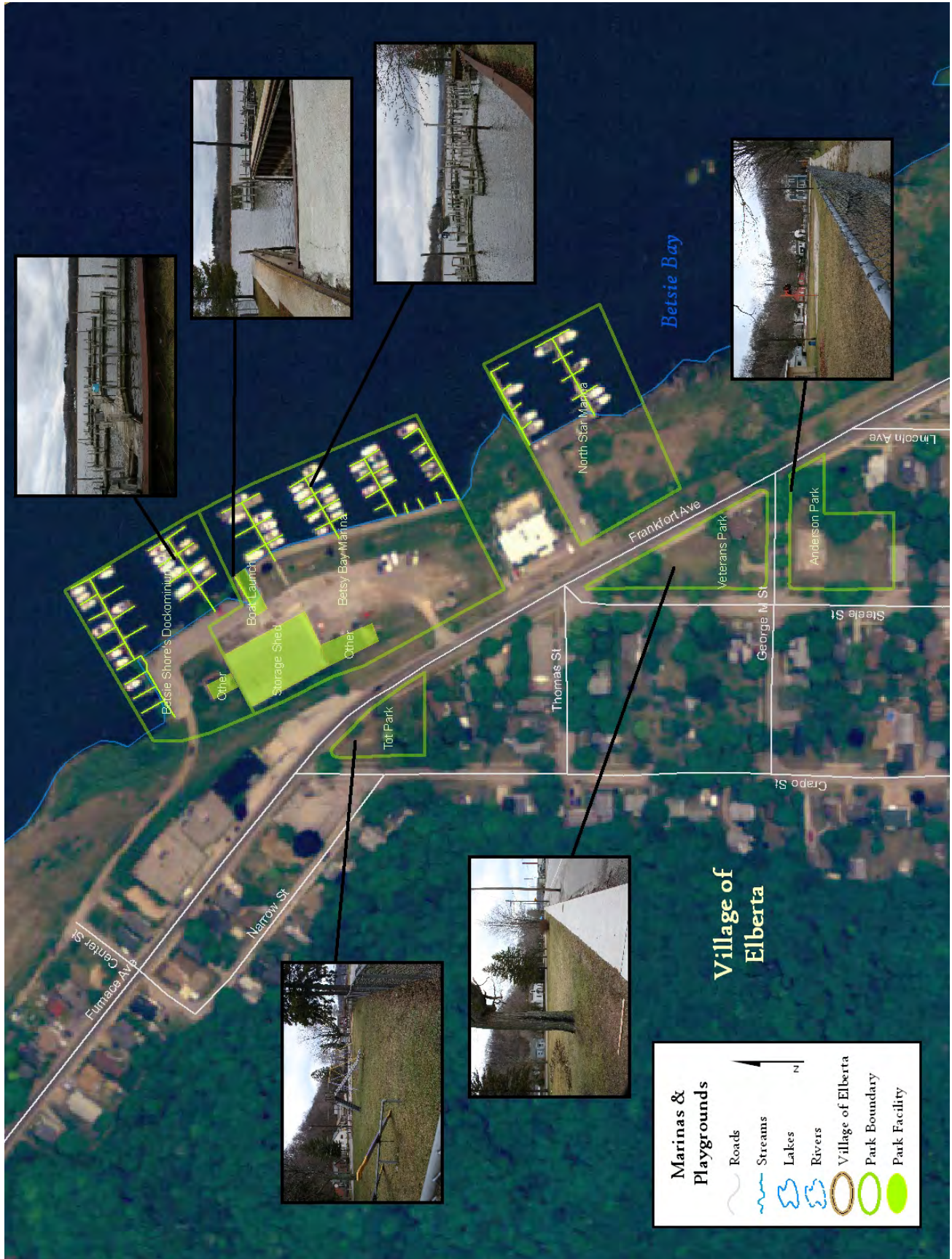
Public & Private Marinas and Neighborhood Playgrounds

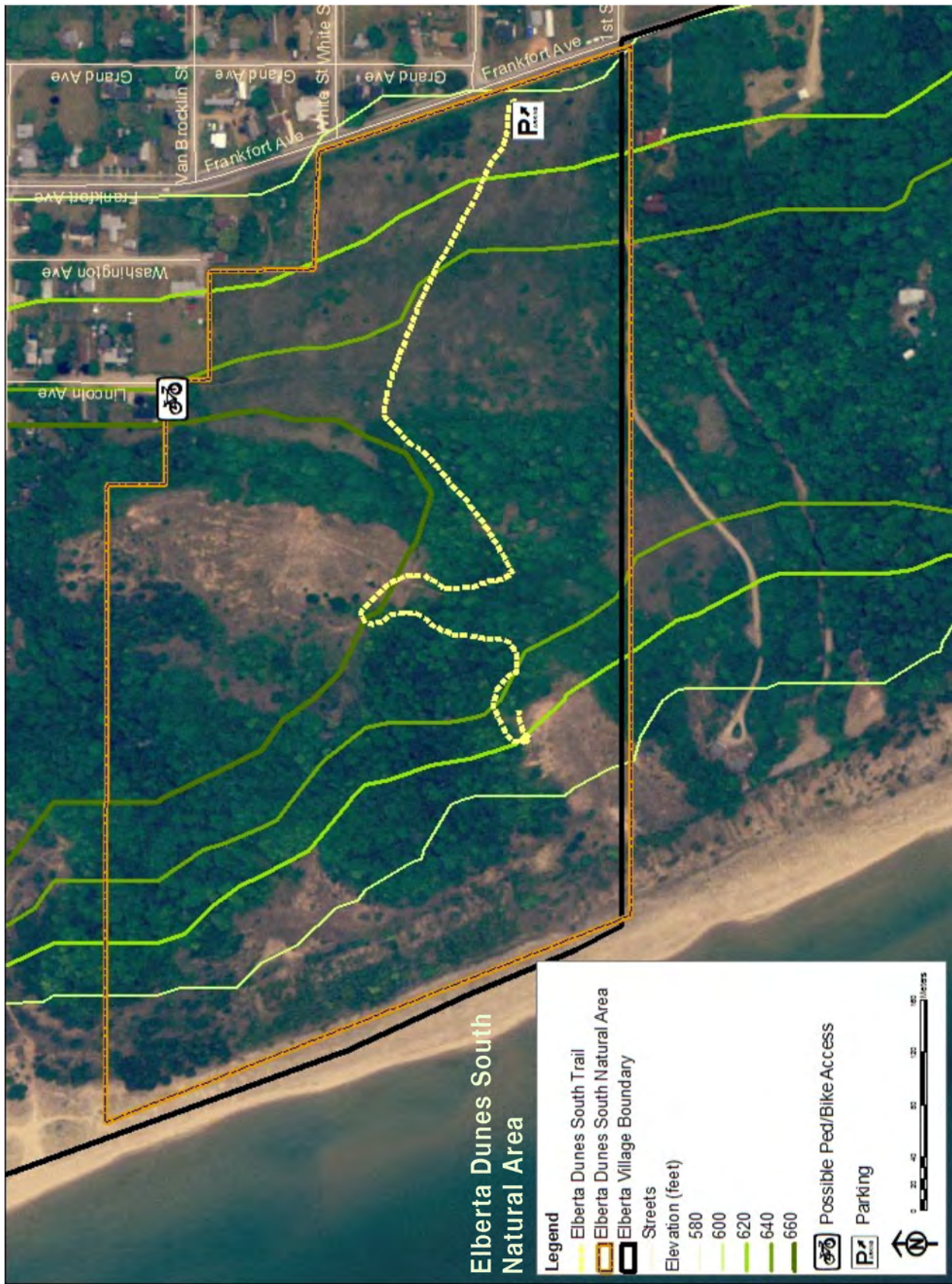
Elberta Dunes South Nature Trails







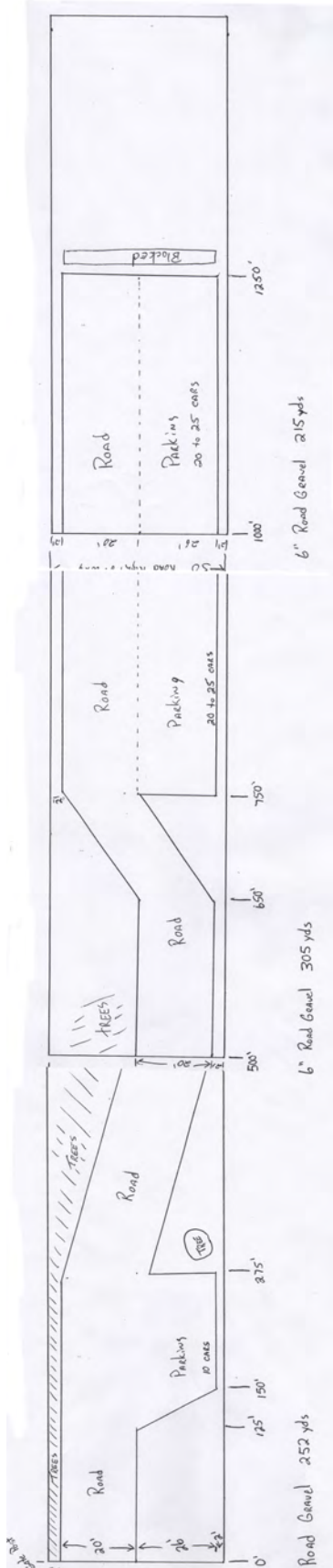


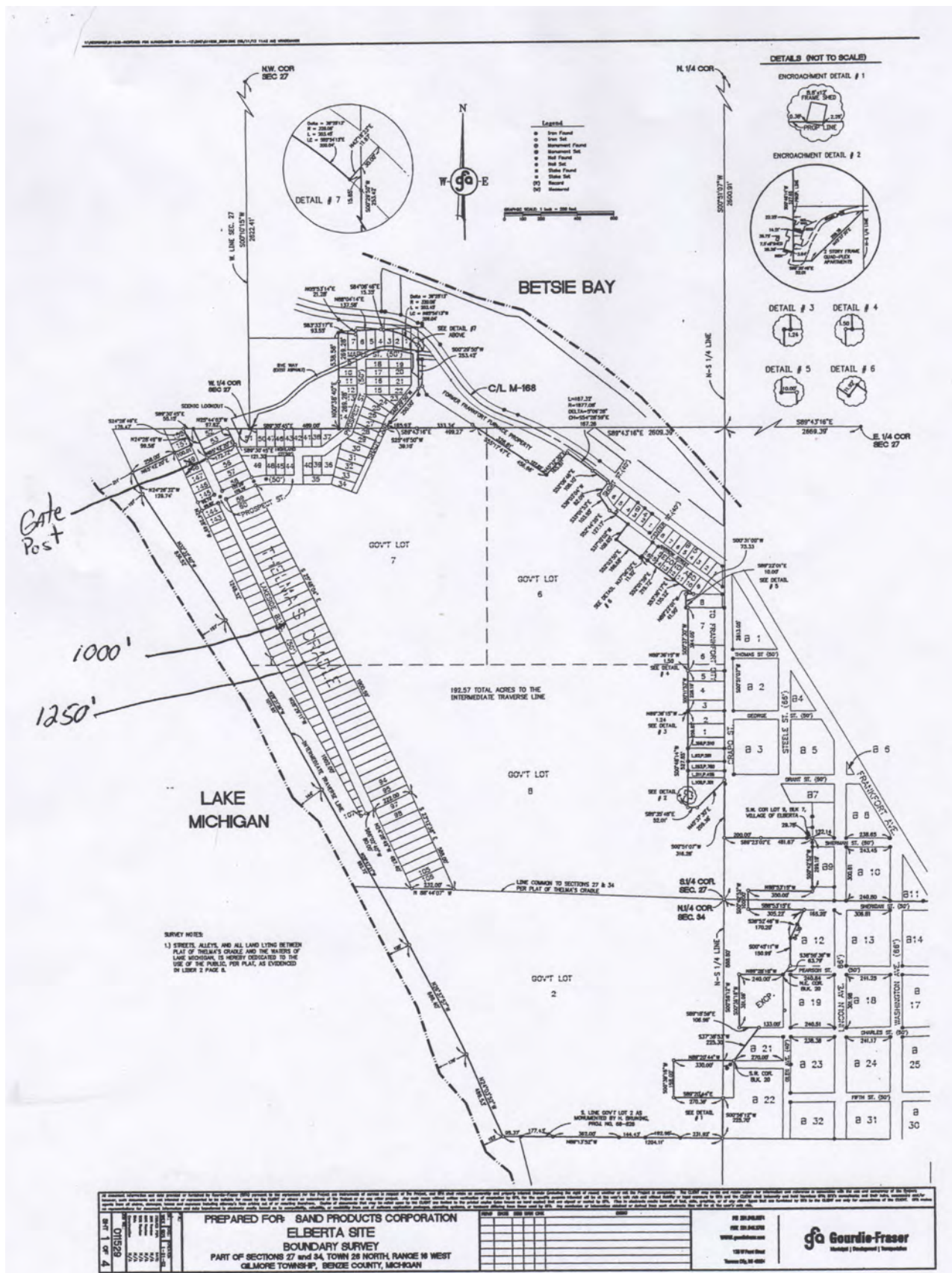


Appendix B: DPW Head Ken Bonney's Schematic of the Proposed Beach Road Project and Plat Map of Thelma's Cradle

Lakeside Blvd. is a platted road that extends approximately 1,400 feet. Because of wear and tear, erosion, and dune shift, it is hard to determine where the road is, and the two tracks and other worn paths are impassible for many smaller vehicles. In summer 2012 Ken Bonney put together this schematic as a possible plan for a 1,250-foot developed road. He estimated that at \$20/yard, a gravel road, including grading, would cost \$31,040 to create. The DEQ permit for constructing this road would be \$600 and would be good for 5 years. It's estimated to take two to three months to process this permit.

Thelma's Cradle and Lakeside Blvd. are Village owned and the public are welcome. The rest of Elberta Beach is privately owned. The area is designated by the state as a critical dune and high erosion zone. Vehicles trespassing on private property or entering critical dune areas are unlawful and subject to a fine of up to \$1,500.





**Appendix C: Estimate of Work Still Needed on Life Saving Station
Submitted by Ross Thorsen**

INVENTORY NEEDS OF ELSS PROJECTS
February 2013

LSS BUILDING

<u>Est. Cost</u>	Activity
10,500	Build and install 30 missing wood storm windows
10,000	Rework Double Hung Windows
13,000	(Re) Paint exterior: 5,000-6,000 square feet
2,500	Replace wooden doors; these are narrow locker (exterior) doors that have been permanently shut
14,500	Replace all rotted exterior woodwork, including siding and sheathing behind large decking area. <u>Major Problem</u>
9,000	Rework large deck area and install grating to help drain water away from siding and doors. <u>Major Problem</u>
???	Access upper level so public can enter and use...may provide income for Village. Currently stairwell too narrow for upstairs access. --Ideas for how we can do this???
10,000	Repaint interior; replace broken locksets
2,200	Install coat racks
1,400	Install flood light at flag pole. Replace missing and broken outside outlet covers and boxes
\$73,100	Total (plus cost of upper level access)

Appendix D: Public Input Documentation

Legal Notices for Public Input Workshop, Public Review and Comment Period, and Public Meeting Held

Copy of Public Input Survey distributed at April 18, 2013 Public Input Workshop

Summary of Responses Received from Public Input Workshop

Summary of Responses Received from Public Review and Comment Period

Copy of Minutes from Public Meeting held April 18, 2013

Copy of Minutes from Final Public Hearing and Adoption Meeting held November 21, 2013



Parks and Recreation Commission

2014–19 Village of Elberta Recreation Plan Public Input Wanted!

The next 5-year plan for recreation in the Village of Elberta is now being prepared. It will cover the years 2014–19. We're revising the 2008–13 plan and we need your input. We want to know how you currently use Elberta's parks and natural areas and what recreational amenities you would like to see included in the plan.

All are welcome to attend the Public Input Session being held before the regular Village Council meeting

**Thursday, April 18, 2013
From 7 pm to 8 pm
Village Community Building
401 First Street
Elberta, MI 49628**

A Recreation Plan is a document communities create to define their recreation and resource conservation goals and to establish recreation grant eligibility. The plan will be used to guide the future development of recreational facilities, opportunities and programs in the Village of Elberta. It will also be used to seek funding, including funds earmarked for implementing Recreation Plans approved by the Department of Natural resources.

We hope to see you at the public input session. We will be completing a survey and want to hear your hopes and dreams for Elberta. A draft of the plan is available at the Village Office and at the Village of Elberta website at

<http://villageofelberta.com/village-of-elberta-parks-and-recreation-plan-2008-2013/>

If you can't make the hearing you can submit comments by email to Jennifer Wilkins at smilinjen10@yahoo.com, or by mail to Village of Elberta Parks and Recreation, 151 Pearson Street, Elberta, MI 49628. We'll incorporate your comments into the final plan.

This meeting is open to all members of the public under Michigan's open meetings act. If you are planning to attend and have a disability requiring any special assistance at the meeting, please notify Village Clerk Sharyn Bower at (231) 352-7201.

151 Pearson Street, Elberta, MI 49628 • (231) 352-7201

Benzie County Record-Patriot Legal Notices

Page 19

MEETINGS/HEARINGS

**VILLAGE OF ELBERTA
RECREATION PLAN**

A public hearing will be held on Apr. 18, 2013, at 7 p.m. at the Community Building, 401 First St., Elberta, MI 49628. The regular meeting will follow the public hearing with action taken at this time. The purpose of the public hearing is accept public comments concerning a proposed five year recreation plan before the plan is presented to the Elberta Village Council for adoption. The proposed recreation plan will be available at the Village Office, 151 Pearson St., Elberta, MI 49628, during regular business hours.
Sharyn Bower, Clerk
Village of Elberta
Apr. 3, 2013

February 27, 2013

Wednesday, Oct. 23, 2013 • Benzie County Record-Patriot

PUBLIC NOTICE

NOTICE IS HEREBY given that the Public Accuracy Test for the November 5, 2013 Special Election is scheduled for Thursday, October 31, 2013, at 10 am at the Platte Township Hall, 11935 Fowler Road, Honor, Michigan. The public accuracy test is conducted to demonstrate that all votes cast at this election meet the requirements of Law.

Alicon Michalak
Platte Township Clerk
October 23, 30, 2013

**NOTICE OF PUBLIC HEARING
VILLAGE of Elberta**

There will be a public hearing of the Elberta Village Council on November 21, 2013, at 7:00 p.m. at the Community Building, 401 First St., Elberta, MI 49628. The regular meeting will follow the public hearing with action taken at this time. The purpose of the public hearing is to accept public comments concerning the final draft of a proposed five-year recreation plan before the plan is presented to the Elberta Village Council for adoption. The proposed recreation plan will be available at the Village Office, 151 Pearson St., Elberta, MI 49628, during regular business hours, and on the Village website.
Sharyn Bower
Village Clerk
October 23, 2013



Parks and Recreation Commission

2013 PARKS AND REC SURVEY

Every five years, the Village updates its Parks and Recreation Plan. We need your input to make a good plan for 2014–2019. Please take a few minutes to answer these questions. Thanks for your help!

1. Please tell us the number of people in your household and their ages.
2. Currently all Parks and Rec projects are funded by volunteer fundraising, except for the Farmers Market, which is funded by vendor booth revenue. How do you suggest Parks and Recreation services/resources be funded?

user fees grants/foundation support memberships volunteer fundraising

Other

3. How do you use each of Elberta's Park areas, and how often?

Elberta Historic Waterfront Park

Elberta Lake Michigan Beach

Dudley Penfold Memorial Park (aka Mini-Pond/Farmers' Market Park)

The Community Building/Ball field

Tot Park

Veterans Park

Anderson Park

Betsie Valley Trail

Elberta Dunes South

4. What changes would you like to see in Elberta's parks (equipment, maintenance, facilities etc.)?

5. What could we do in the next five years to make Elberta an even better destination for recreation?

6. Would you be willing to participate in workdays? Would you like to join the Parks and Rec Commission and/or the Solstice Committee? Volunteer opportunities abound!

- I'd like to participate in workdays
- I'd like to join the Parks and Rec Commission
- I'd like to join the Solstice Committee
- I'd like to help with historic preservation
- I'd like to help with Beach-related projects
- I'd like to help with the Farmers' Market
- I'd like to help with the Mini Pond Park boat launch/boardwalk project
- I'd like to help with the Elberta Life Saving Station
- I'd like to help with fishing-related projects
- I'd like to help with Betsie Valley Trail projects
- I'd like to help with Dunes Park South projects
- I'd like to help with the Elberta Arts and Crafts Fair
- I'd like to help start a community garden
- I have a big idea I'd like to share with the Commission
- Special skills I'd like to share _____

Please share your contact information if you checked any of the boxes above.

Name _____
phone number _____
e-mail address _____

151 Pearson Street, Elberta, MI 49628 • (231) 352-7201

Summary of Responses Received at Public Input Workshop April 18

Village Clerk Sharyn Bower did not provide official minutes from the Recreation Plan public hearing. Instead, Emily Votruba provides here a summary based on an audio recording and notes she made. Page 1 of the official minutes from the April 18 meeting, showing that the hearing was held, is also included.

Public Present: About 30 members of the public attended the workshop on April 18. Seven surveys were returned.

INPUT SESSION SUMMARY

The plan we're looking at today is a draft based heavily on the previous plan (2008–2013), which to our knowledge was the first official Village recreation plan. We have to produce a plan every five years in order to qualify for certain grants. The previous plan was produced with great help from the Northwest Michigan Council of Governments. The current plan has an inventory of our parkland, maps, and an overview of the area in general, with a few updates made to the previously included maps to reflect population decline and one street-name change. The current draft highlights some of the progress that has been made, including the successful acquisition of the Elberta Dunes South Park. The purpose of this meeting tonight is to have the public give us their ideas for what the priorities of this plan should be.

Those present, including council members, broke into small groups and brainstormed on large pieces of paper for about 20 minutes.

One group said their priority was Elberta Dunes South, establishing three different levels of trails there beginning in the parking lot and proceeding up into the dune, winding through the woods and ending at a viewing platform at the top. Parking at Elberta Beach on the proposed road was also a huge priority for this group, as were permanent restrooms at the beach. This group also wanted to see Lakeside Shakespeare return to the Waterfront Park. They were concerned that Elberta continue to host an Art Fair, whether the one organized through Chamber or one we start on our own. They wanted upkeep and improvements to the LSS to continue, and the Foundry building to be preserved and developed into a venue with an accessible interior space and an attraction of some sort.

Another group said they wanted to incorporate more cultural concerns into Parks and Recreation programming, along the lines of the Elberta Arts Council group that formed in 2010 and which has stalled. They suggested rotating sculptures in the Duck's Head space and installing sculptures along M-168. County Commissioner Don Tanner noted that more grant funding might be available if cultural concerns were incorporated into certain plans. They wanted to see the LSS turned into a museum, or perhaps another building around town could serve that function. They wanted to improve access for fishing in the Penfold/Marina Park. They thought service clubs and adopt-a-park organizations could provide volunteers and fundraising. They cited Frankfort's Rotary Park, which is maintained by the Rotary

Club. They noted that improvements to the smaller parks could be as simple as adding benches and flowers.

A third group suggested incorporating the Betsie Valley Trail plan into the Recreation Plan. They liked the idea of creating tribute tiles or bronze plaques for the Duck's Head planter, in addition to decorative mosaic work. Some previous designs for improvements to the lookout area and road to the beach could be incorporated into the plan and the road down to the beach. A community garden could be established in the rock basin of the turntable Sundial in the Waterfront Park. They suggested installing a sign honoring Lucy Keillor and Peter Penfold in the Penfold/Marina/Mini-Pond Park.

SURVEY RESPONSES

1. 2 senior retirees suggest raising funds through user fees and memberships. They use the Waterfront Park 2-3 times per year; Elberta Beach 25-30 times a year; they attend the Farmers' Market at Penfold Park; Betsie Valley Trail 2 times a year; Elberta Dunes South 2 times a year; they'd like to see permanent toilets in the parks; to bring more visitors they suggest: more festivals, Shakespeare in the Park, guided hikes and history tours. They'd be willing to participate in workdays, join the Commission, the Solstice Committee, help with historic preservation; help with beach projects; the boat launch/boardwalk project; fishing-related projects. Dan and Mary Link, 231-399-0151; mal4964@gmail.com
2. 1 self-described "old" person was not sure how to fund Parks and Rec projects besides volunteer fundraising. This person fishes and walks in the Waterfront Park about once a week, swims/walks a dog at Elberta Beach every day, attends the Farmers' Market, goes kayaking from Penfold about once a week, rides a bike on the Betsie Valley Trail 2-3 times a week, and walks a dog at Elberta Dunes South every day. Would like to see permanent restrooms. Would like to see more welcoming of tourists and others not in county. Would help with: workdays, historic preservation, beach projects, Mini Pond boat launch/boardwalk, Life Saving Station, fishing, Betsie Valley Trail, Dunes Park South, Elberta Arts and Crafts Fair, starting a community garden. Special skills: painting, brush clearing. Sue Oseland, 231-383-5904, sueoseland@gmail.com
3. 2 adults aged 71 and 72 suggest user fees might be a good idea for funding along with an annual car sticker/fee. They say they never use any of the Elberta parks but they recommend them to others. They would like to see improved general upkeep and planters of flowers. Would be willing to help during nonworking hours. Lois Schram, 231-352-7066, lschram62@hotmail.com
4. Marcia Stobie, of Gilmore Township, suggested grants and foundation support as well as memberships for fundraising. She uses the Waterfront Park about 5 times a year, Elberta Beach once a week during the summer, Penfold Park weekly, the Community Building and Ballfield once a month, the Betsie Valley Trail 1-2 times a week, Elberta Dunes South 3-4 times a year. She would like to see permanent restrooms at Elberta Beach

5. An anonymous person: uses the beach, and the exercise equipment in Anderson Park. Would like to see speedbumps and posted speed limit signs. Would like to see less oversight by Reggie Manville. Would like to see surveillance for vandals, community sporting events such as softball, and cookouts, more kids' activities, a Veterans Day picnic, a basketball tournament, mountain bike race, volleyball. Suggests not promoting Elberta to the "fudgies." Would like to see a bronze statue of Jennifer Wilkins.
6. 2 adults suggested user fees, grants and foundation support, and volunteer fundraising. They use the Waterfront Park, Elberta beach, Penfold Park, Anderson Park, and the Betsie Valley Trail "a lot." They use the Community Building/Ballfield, Veterans Park, and Elberta Dunes South sometimes. They would like permanent restrooms. They would help with: Beach related projects, Mini Pond boat launch/boardwalk, Dunes Park South. Jinx Jenks, 231-352-6328.

A public hearing and the regular meeting of the Elberta Village Council was held on Thursday, April 18, 2013 at 7:00 p.m. at the Community Building, 401 First Street, Elberta.

The Pledge of Allegiance was recited at the beginning of the meeting.

Present: President Pro-Tem, Jenks, Bower, L.Manville, Holmes, Gattrell, Wilkins and Stapleton.

Absent: R.Manville

Guests: Ken Bonney, Emily Votruba, Lois Schram, Scott Gest, Bill Soper, Connie Manke, Loy Putney, Max Kessler, Don Tanner, Cheryl Gross and Sue Oseland.

Jenks read a letter of apology to the Council and those in attendance. See attached.

APPROVAL OF MINUTES: Jenks added a correction to the minutes of the March 21, 2013 meeting. Jenks said that the last sentence under public comment from the minutes of the March 21, 2013 attributed to her was incorrect. She said that it should have read that the Solstice Festival money was raised through volunteer efforts and the Solstice Committee. The council should not micro manage how those funds are spent. The solstice committee has a plan for dollars earned; it provides seed money for next Solstice and specific goals set by P&R and Solstice committee Motion by L.Manville supported by Holmes to approve the minutes from the regular meeting of March 21, 2013 meeting with corrections. Yeas – 6.

APPROVAL OF AGENDA:

L.Manville asked that #4 - Zoning Ordinance Additions be added to the agenda. She also asked that # 5 be added concerning the updating of the Zoning Ordinance. Motion by L.Manville supported by Wilkins to approve the proposed agenda with the addition of #4 and #5. Yeas – 6.

PUBLIC COMMENT:

Summary of Responses Received During Comment Period

From Lois Schram, 744 Lincoln Avenue, Elberta

The playground equipment mentioned as part of the assets of the Community Building/Ballfield park area should be deleted, as they're to be given to Loy Putney for use on the old Bay Valley Inn Property. [This decision was made by Council during Putney's special use permit appeal process.]

From James Gibson, of Gilmore Township

As a user of the Elberta Beach area since 1974 I believe the beach property is the most valuable asset the Village has. As such, it should never be sold to any private interests, regardless of its monetary value. I simply can't make a stronger statement than this.

As for the development plan for 2014-2019 I will focus on the Elberta Beach portion of the plan. The best plan is one which benefits the Village of Elberta but with minimal environmental and economic impact. In other words, Keep It Simple. I believe the proposed plan (for the beach area) is not minimal economically or environmentally.

A concession area is simply not needed. If beach-goers want to bring food to the beach area they can do so by supporting any of the local businesses in Elberta and bring this purchased food to the beach.

Improved rest room area? Yes.

Four rest room units? No. Just two units near the first parking area would be sufficient.

Three parking areas (as indicated on the map)? It may be more logical/economical to improve the current one and have a small parking area at the end of the road where the blockade is proposed.

It is important to remember from a financial perspective that the real beach season here is very short. The crowds arrive at the 4th of July and depart by the end of August. The Village of Elberta should be cautious about putting too many development \$\$ in locations where it isn't needed.

It is also important to remember that the primary attraction to the Elberta Beach area is the natural beauty. This alone makes it a true gem on the shores of Lake Michigan. If tourists want a more civilized beach experience then Frankfort is the place for them.

From Diane Jenks, 241 Grant Street, Elberta

Pg. 9 Public:

1. Elberta Historic Waterfront Park—5.6 acres of land.
Development of this park was made possible by 4 grants: Elberta Economic Development Corporation with the leadership of Charles Eckenstahler, PCT, consulting firm was instrumental in procuring these grants.
 - a. (TF98-033) exclude fishing deck
 - b. (TF99-014) ...

- c. Great Lakes Fishery Trust, fishing deck, The GLFT allowed the village to use the \$104,000 awarded for the fishing deck to be utilized upfront for the match for the MDNR Trust Fund Grant.
- d. Traverse City Rotary Charities, Children's playground. The match was in-kind community build. Three days guided by a playground consultant the community put together this handicap accessible structure.

The swing set was part of the original playground grant however a handicap swing has since been added and paid for by the efforts of the Elberta Parks and Recreation Commission. Twelve of the wooden picnic tables in the park were built through a fundraiser from Elberta EDC and volunteers working together to construct the tables. The largest donation came from the Frankfort and Honor Building Supply.

Elberta EDC takes great pride in the fact that no tax dollars were used to build this beautiful park. The continuing efforts of the Village and Elberta Parks and Rec Commission maintain the park with fundraising efforts of Park and Rec and rental of the Life Saving Station.

Pg. 10

1. Dudley Penfold/Lucy Keillor Memorial Park. It appears that both Mr. Penfold and Mrs. Keillor were responsible for the village now being the proud owner of this 4 acre park

The wooden foot bridge was designed and built by Bill Soper and _____[?]. Spearheaded by Elberta Parks and Recreation Commission. Pavilion and wooden playground train also funded by Parks and Recreation. This park is also home of the Elberta Farmers Market started in [2002] and continues to grow and prosper due to the efforts of Elberta Parks and Rec and Sue Oseland the current master.

Pg. 11

1. Community Building/Ball diamond

Community building with restrooms funded through a grant and fundraising efforts of Elberta EDC. The building can be rented for parties, meetings, classes, any small gathering. The ball diamond, bleachers, dugout funded and maintained by Frankfort–Elberta Athletic Association. The playground equipment is coowned by the village and the Bay Valley Inn [see comment from Lois Schram, above; the equipment straddled the Bay Valley Inn Property and the Village property and a decision was made to remove it for transfer to the Bay Valley Inn Property.]

2. Tot Park should include any recognition for P&R. Same with Anderson Park

Playground equipment funded and maintained by Elberta Parks and Rec and DPW super Ken Bonney.

Pg. 12

Betsie Valley Train is a designated trail that was the old Ann Arbor [Railroad] Corridor. Although section D was not in the original funding, the trail is designated and will be finished when funding becomes available.

Pg. 23 not complete on my copy. Could you add something to the effect that;

Thelma's Cradle and Lakeside Blvd. are village owned and public are welcome. The rest of Elberta Beach is privately owned. The area is in a designated critical dune and high erosion area. Vehicles trespassing on private property and critical dune is unlawful and subject to a fine up to \$1,500.

Appendix E: Approval Documentation

Official Resolution of Adoption by the Village of Elberta Council

Official minutes reflecting Benzie County Planning Department's approval of plan

Official Resolution of Adoption by the Village of Elberta Council

VILLAGE OF ELBERTA
Recreation Plan
Resolution of Adoption
COUNCIL of the VILLAGE OF ELBERTA

WHEREAS, the VILLAGE OF ELBERTA has undertaken a Five Year Parks and Recreation Plan which describes the physical features, existing recreation facilities and the desired actions to be taken to improve and maintain recreation facilities during the period between 2014 and 2019, and

WHEREAS, a public comment session was held April 18, 2013, at the Community Building to provide an opportunity for citizens to express their opinions, ask questions, and discuss all aspects of the Recreation Plan, and

WHEREAS, the Village of Elberta has developed the plan for the benefit of the entire community and to adopt the plan as a document to assist in meeting the recreation needs of the community, and

WHEREAS, after the public meeting, the VILLAGE COUNCIL voted to adopt said Recreation Plan.

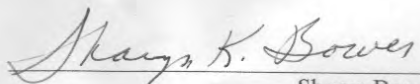
NOW, THEREFORE BE IT RESOLVED the VILLAGE OF ELBERTA COUNCIL hereby adopts the VILLAGE OF ELBERTA Recreation Plan as a guideline for improving recreation for the residents of the VILLAGE OF ELBERTA.

Yeas: R. MANVILLE, JENKS, L. MANVILLE, HOLMES, GATRELL,
WILKINS, ROYMELL

Nays: 0

Absent: 0

I, Sharyn Bower, VILLAGE Clerk, do hereby certify that the foregoing is a true and original copy of a resolution adopted by the VILLAGE COUNCIL at a Regular Meeting held on the 19th day of December, 2013.



Sharyn Bower
Village Clerk

Official minutes reflecting Benzie County Planning Department and County Commission approval of plan

COMMISSIONERS

Page 4

February 4, 2014

COUNTY ADMINISTRATOR'S REPORT - Karl Sparks

About 35 people attended the OMA training and they will continue to offer it quarterly.

FOIA training is scheduled for February 26 from 1 – 4:00 p.m.

Had a mini workshop on compensation policies for the HR committee and will hold another presentation on February 21 at 8:30 a.m. for the leadership forum.

Presents the job description for the support staff in his office.

Presents a wage/salary increase for non-union employees equal to that given to the employees within the union contracts.

Sexual harassment workshop scheduled for February 24 at 8:30 a.m.

Motion by Tucker, seconded by Kelley, to have the sexual harassment issue discussed and taken care of with Craig Johnson, Karl Sparks and the EMS department, immediately. Ayes: Bates, Griner, Kelley, Rineer, Tanner, Tucker and Walterhouse Nays: None Motion carried.

They are working on making the personnel policy and union contracts more alike and clear; they are working with Peter Cohl to resolve the issues; also our personnel policy says that elected officials need to sign acceptance or exception of the policy.

FINANCE

Motion by Walterhouse, seconded by Griner, to authorize payment of the bills from January 21, 2014 to February 4, 2014 in the total amount of \$393,218.50 as presented. Roll call. Ayes: Bates, Griner, Kelley, Rineer, Tanner, Tucker and Walterhouse Nays: None Motion carried.

Michelle Thompson, County Treasurer, presents a cash fund summary report and states that the auditors are here this week if you have any questions for them.

Veterans Budget amendment: Motion by Walterhouse, seconded by Kelley, to amend the 2013-14 budget for Veterans as follows:

Increased:

294-000-839.10	Aid to Veterans	\$30,000
----------------	-----------------	----------

Decreased:

294-000-539.00	State Grant	\$30,000
----------------	-------------	----------

Roll call. Ayes: Bates, Griner, Kelley, Rineer, Tanner, Tucker and Walterhouse Nays: None Motion carried.

HR and PERSONNEL

Motion Walterhouse, seconded by Tucker, to adopt the HR Consent Calendar items 1 -3 as presented.

Roll call. Ayes: Bates, Griner, Kelley, Rineer, Tanner, Tucker and Walterhouse Nays: None

Motion carried.

ACTION ITEMS –

Village of Elberta Recreation Plan – recommendation from the Parks Commission to the Board of Commissioners: Motion by Walterhouse, seconded by Griner, to send a letter of support for the Village of Elberta Recreation Plan, authorizing the chairman to sign. Roll call. Ayes: Bates, Griner, Kelley, Rineer, Tanner, Tucker and Walterhouse Nays: None Motion carried.